

LA-2661

C.3

CIC-14 REPORT COLLECTION
REPRODUCTION
COPY

LOS ALAMOS SCIENTIFIC LABORATORY
OF THE UNIVERSITY OF CALIFORNIA ○ LOS ALAMOS NEW MEXICO

TEMPERATURE-COMPOSITION DIAGRAMS
OF PSEUDO-BINARY SYSTEMS
CONTAINING PLUTONIUM(III) HALIDES

LOS ALAMOS NATIONAL LABORATORY



3 9338 00371 0943

LEGAL NOTICE

This report was prepared as an account of Government sponsored work. Neither the United States, nor the Commission, nor any person acting on behalf of the Commission:

A. Makes any warranty or representation, expressed or implied, with respect to the accuracy, completeness, or usefulness of the information contained in this report, or that the use of any information, apparatus, method, or process disclosed in this report may not infringe privately owned rights; or

B. Assumes any liabilities with respect to the use of, or for damages resulting from the use of any information, apparatus, method, or process disclosed in this report.

As used in the above, "person acting on behalf of the Commission" includes any employee or contractor of the Commission, or employee of such contractor, to the extent that such employee or contractor of the Commission, or employee of such contractor prepares, disseminates, or provides access to, any information pursuant to his employment or contract with the Commission, or his employment with such contractor.

Printed in USA Price \$.50. Available from the

Office of Technical Services
U. S. Department of Commerce
Washington 25, D. C.

LA-2661
CHEMISTRY
(TID-4500, 17th Ed.)

LOS ALAMOS SCIENTIFIC LABORATORY
OF THE UNIVERSITY OF CALIFORNIA LOS ALAMOS NEW MEXICO

REPORT WRITTEN: January 22, 1962

REPORT DISTRIBUTED: April 9, 1962

TEMPERATURE-COMPOSITION DIAGRAMS
OF PSEUDO-BINARY SYSTEMS
CONTAINING PLUTONIUM(III) HALIDES

Compiled by

J. A. Leary

This report expresses the opinions of the author or authors and does not necessarily reflect the opinions or views of the Los Alamos Scientific Laboratory.

Contract W-7405-ENG. 36 with the U. S. Atomic Energy Commission



ABSTRACT

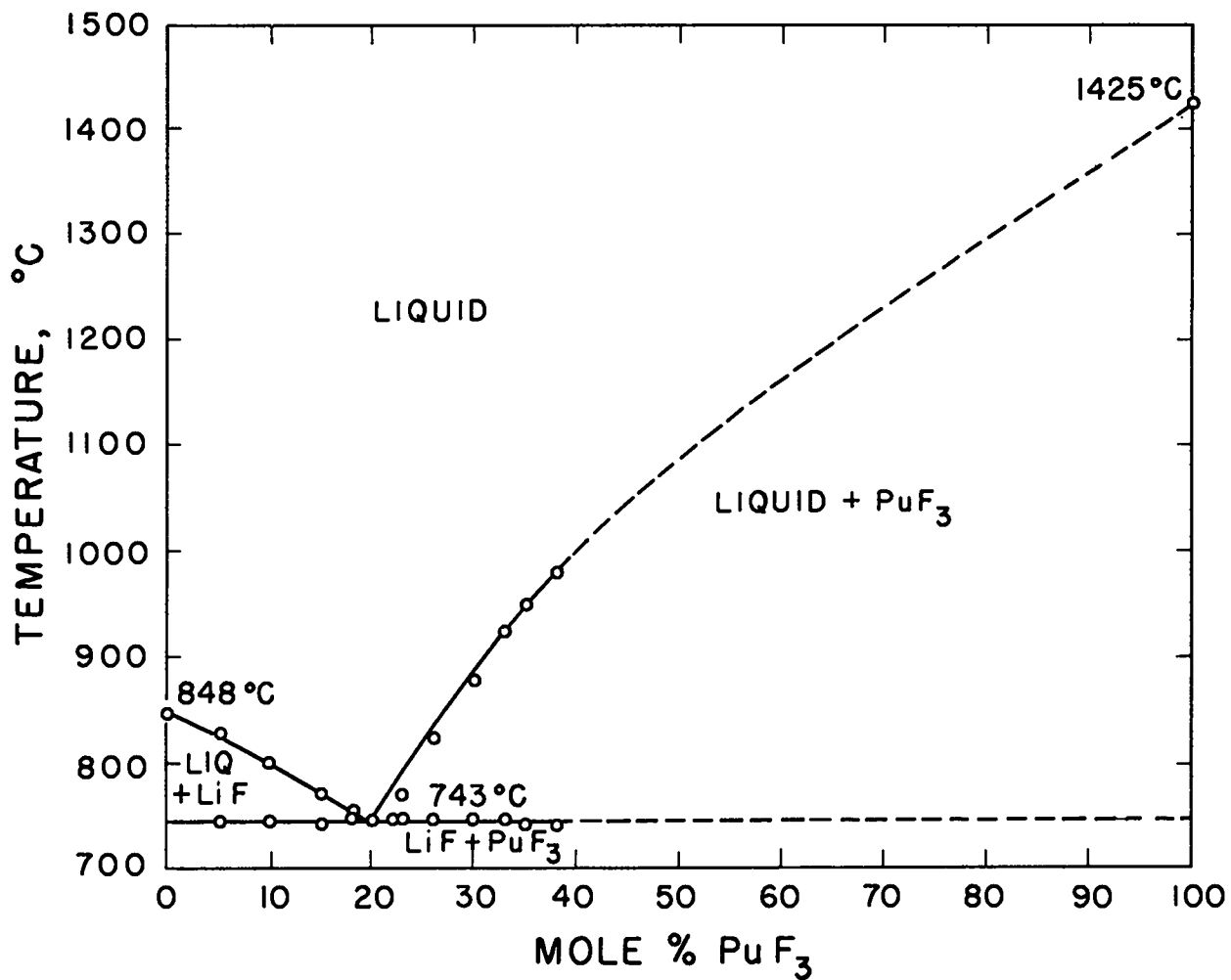
Temperature composition diagrams are presented for the systems $\text{PuF}_3\text{-LiF}$, $\text{PuF}_3\text{-NaF}$, $\text{PuCl}_3\text{-LiCl}$, $\text{PuCl}_3\text{-NaCl}$, $\text{PuCl}_3\text{-KCl}$, $\text{PuCl}_3\text{-RbCl}$, $\text{PuCl}_3\text{-CsCl}$, $\text{PuCl}_3\text{-MgCl}_2$, $\text{PuCl}_3\text{-CaCl}_2$, $\text{PuCl}_3\text{-SrCl}_2$, and $\text{PuCl}_3\text{-BaCl}_2$.

TABLE OF CONTENTS

	<u>Page</u>
Abstract.	2
Foreword	4
Fig. 1 The PuF_3 -LiF System	5
Fig. 2 The PuF_3 -NaF System	6
Fig. 3 The PuCl_3 -LiCl System	7
Fig. 4 The PuCl_3 -NaCl System	8
Fig. 5 The PuCl_3 -KCl System	9
Fig. 6 The PuCl_3 -RbCl System	10
Fig. 7 The PuCl_3 -CsCl System	11
Fig. 8 The PuCl_3 - MgCl_2 System.	12
Fig. 9 The PuCl_3 - CaCl_2 System	13
Fig. 10 The PuCl_3 - SrCl_2 System	14
Fig. 11 The PuCl_3 - BaCl_2 System	15
References.	16

FOREWORD

The following temperature-composition diagrams were constructed from the literature cited in the references. The two plutonium(III) fluoride diagrams were reported in The Journal of Inorganic and Nuclear Chemistry by workers at Oak Ridge National Laboratory, and are included in this compilation with the permission of the authors. All of the plutonium(III) chloride diagrams have been reported in the Journal of Physical Chemistry by workers at Los Alamos Scientific Laboratory. The diagrams have been compiled in this report for convenient reference.



THE PuF_3 - LiF SYSTEM

Fig. 1 (reference 1)

Eutectic point at 743°, 19.5 percent PuF_3

(Reproduced with the permission of J. Inorg. & Nuclear Chem.)

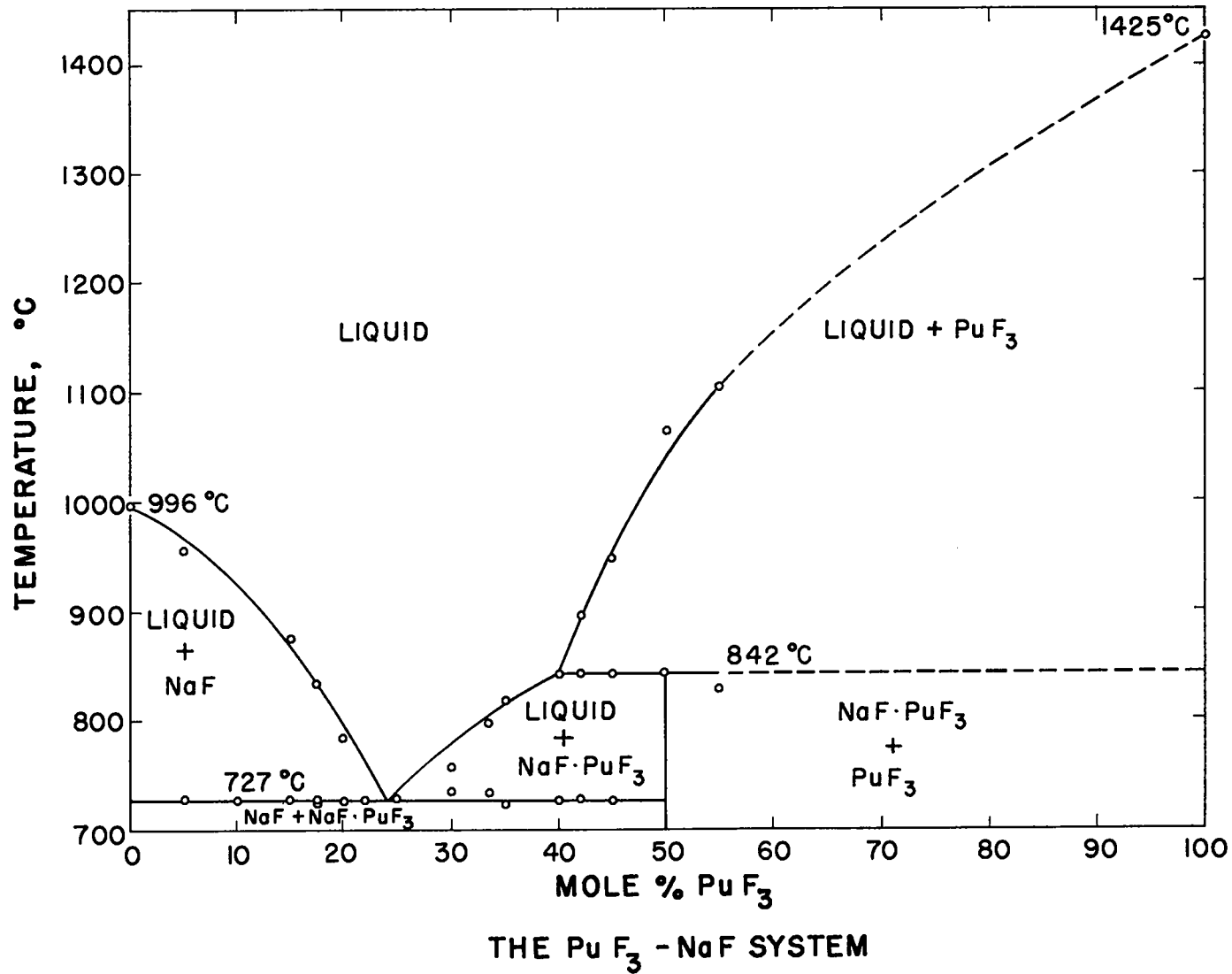


Fig. 2 (reference 2)
 Eutectic point at 727°, 24 percent PuF₃
 Peritectic point at 842°, 40 percent PuF₃
 (Reproduced with the permission of J. Inorg. & Nuclear Chem.)

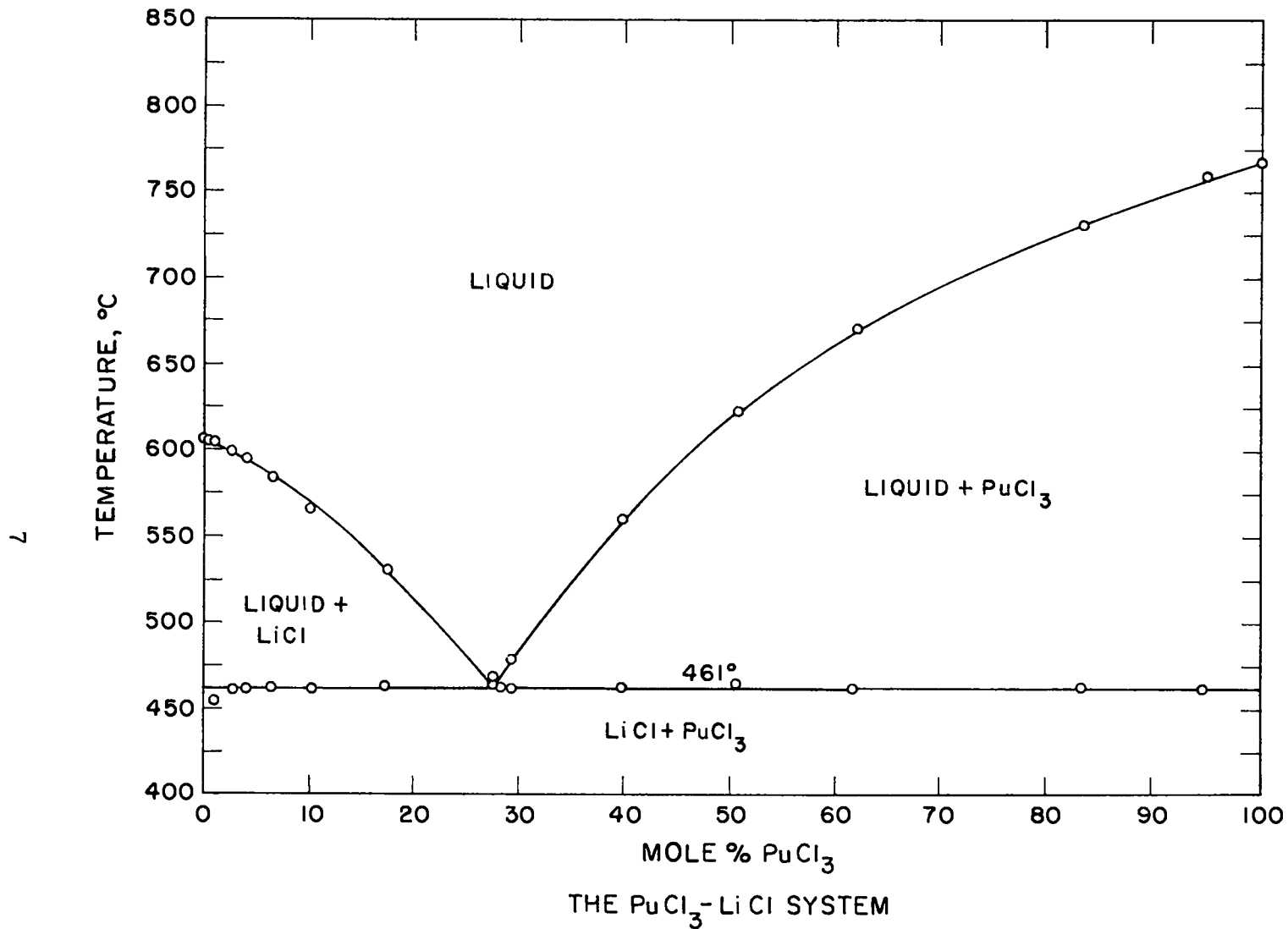


Fig. 3 (reference 3)
 Eutectic point at 461° , 28 percent PuCl_3
 (Reproduced with the permission of J. Phys. Chem.)

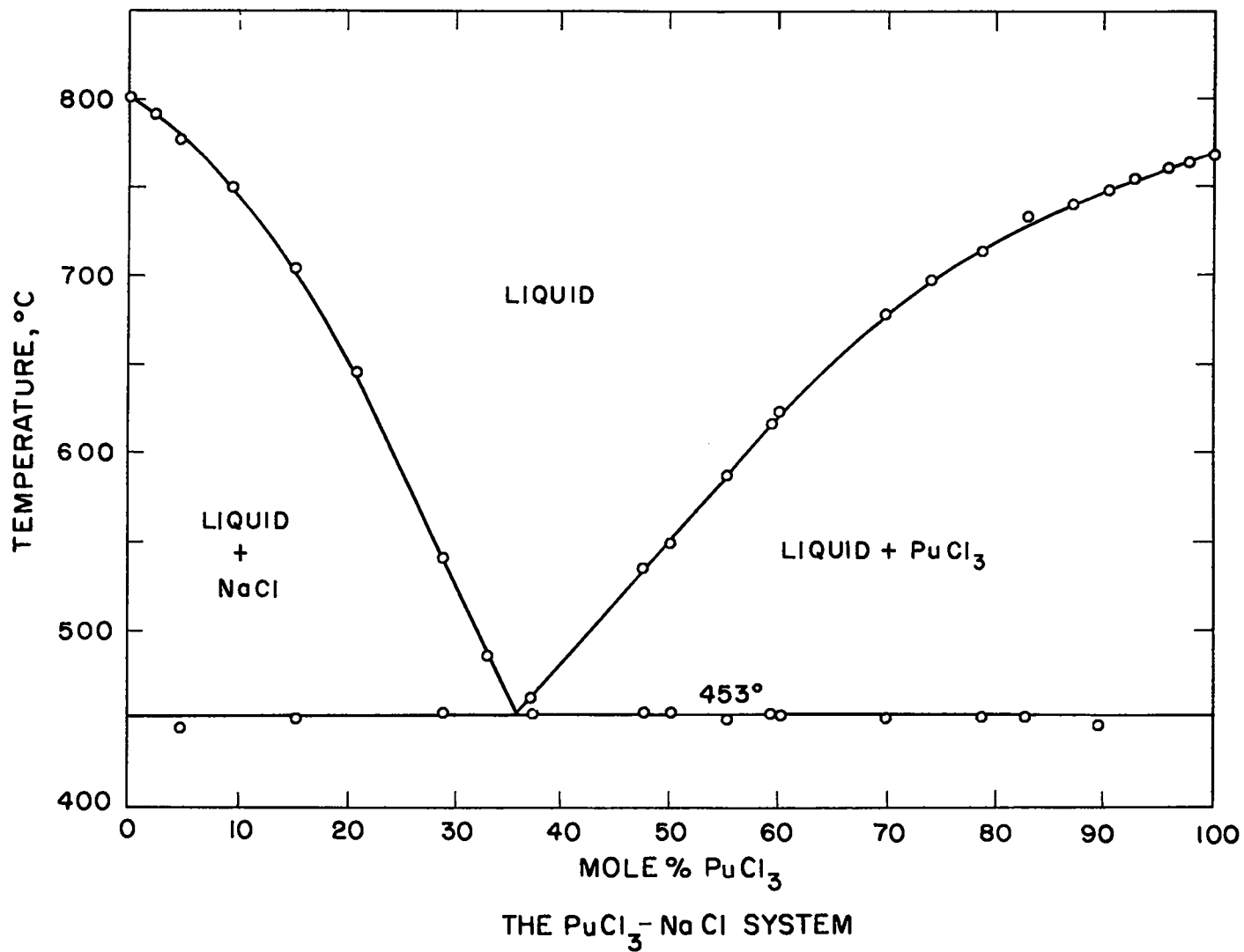


Fig. 4 (reference 3)
Eutectic point at 453°, 36 percent PuCl_3
(Reproduced with the permission of J. Phys. Chem.)

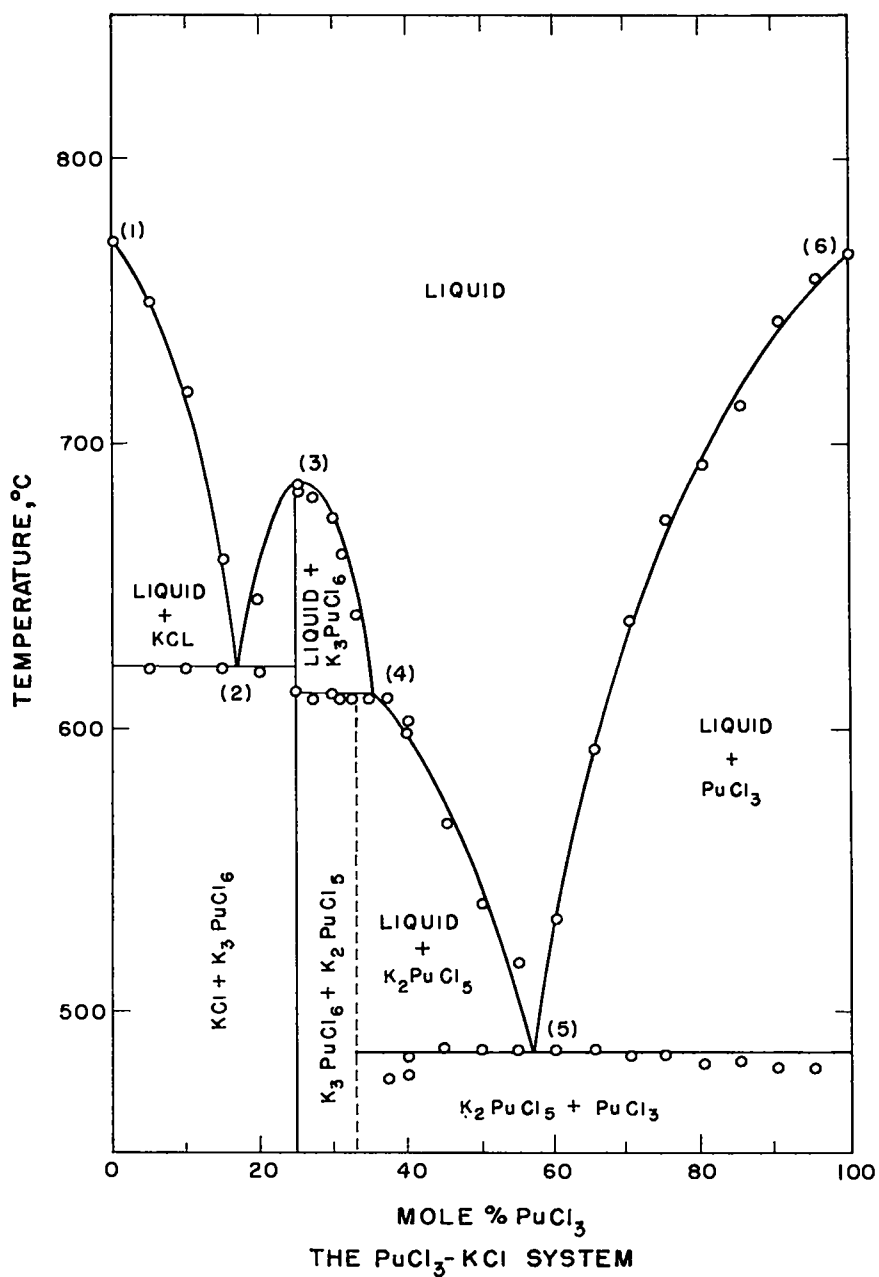


Fig. 5 (reference 4)

- (1) KCl melting point, 771°
- (2) Eutectic point at 621°, 17 percent PuCl₃
- (3) K₃PuCl₆ melting point, 685°
- (4) Peritectic point at 611°, 35 percent PuCl₃
- (5) Eutectic point at 486°, 57 percent PuCl₃
- (6) PuCl₃ melting point, 769°

(Reproduced with the permission of J. Phys. Chem.)

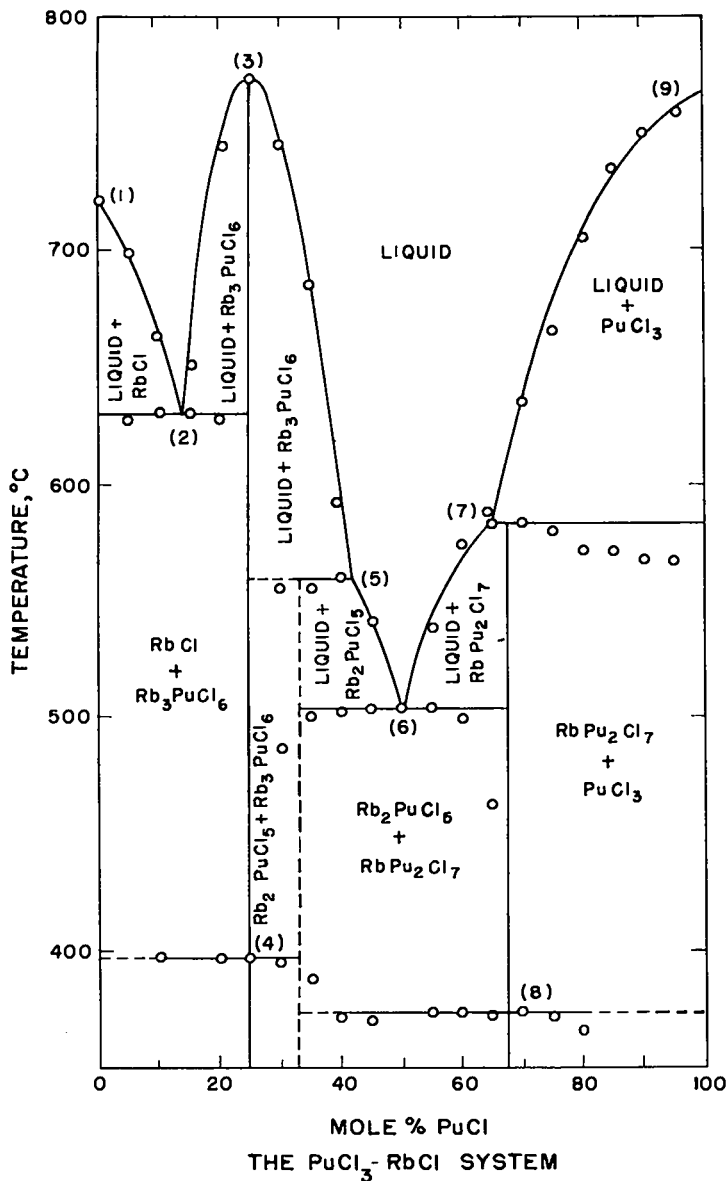


Fig. 6 (reference 5)

- (1) RbCl melting point, 721°
 - (2) Eutectic point at 630° , 14 percent PuCl_3
 - (3) Rb_3PuCl_6 melting point, 774°
 - (4) Rb_3PuCl_6 polymorphic transformation, 398°
 - (5) Peritectic point at 560° , 42 percent PuCl_3
 - (6) Eutectic point at 304° , 50 percent PuCl_3
 - (7) Peritectic point at 584° , 64 percent PuCl_3
 - (8) RbPu_2Cl_7 polymorphic transformation, 374°
 - (9) PuCl_3 melting point, 769°
- (Reproduced with the permission of J. Phys. Chem.)

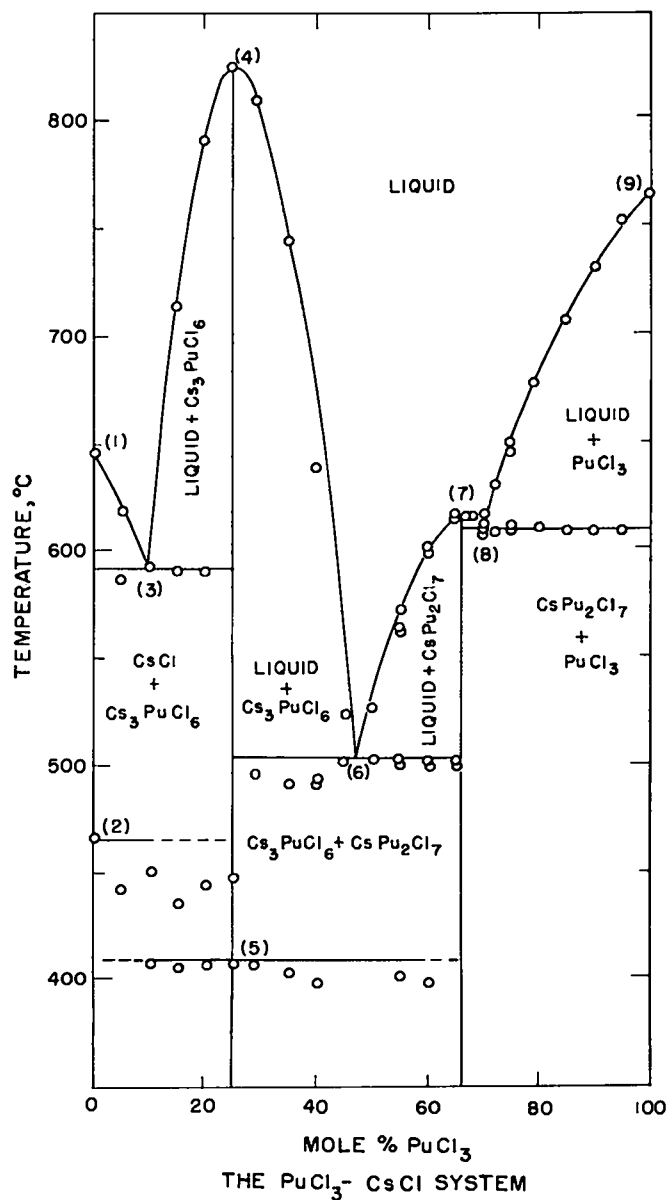


Fig. 7 (reference 5)

- (1) CsCl melting point, 645°
 - (2) CsCl polymorphic transformation, 465°
 - (3) Eutectic point at 592°, 10 percent PuCl₃
 - (4) Cs₃PuCl₆ melting point, 825°
 - (5) Cs₃PuCl₆ polymorphic transformation, 410°
 - (6) Eutectic point at 504°, 47 percent PuCl₃
 - (7) CsPu₂Cl₇ melting point, 616°
 - (8) Eutectic point at 611°, 70 percent PuCl₃
 - (9) PuCl₃ melting point, 769°
- (Reproduced with the permission of J. Phys. Chem.)

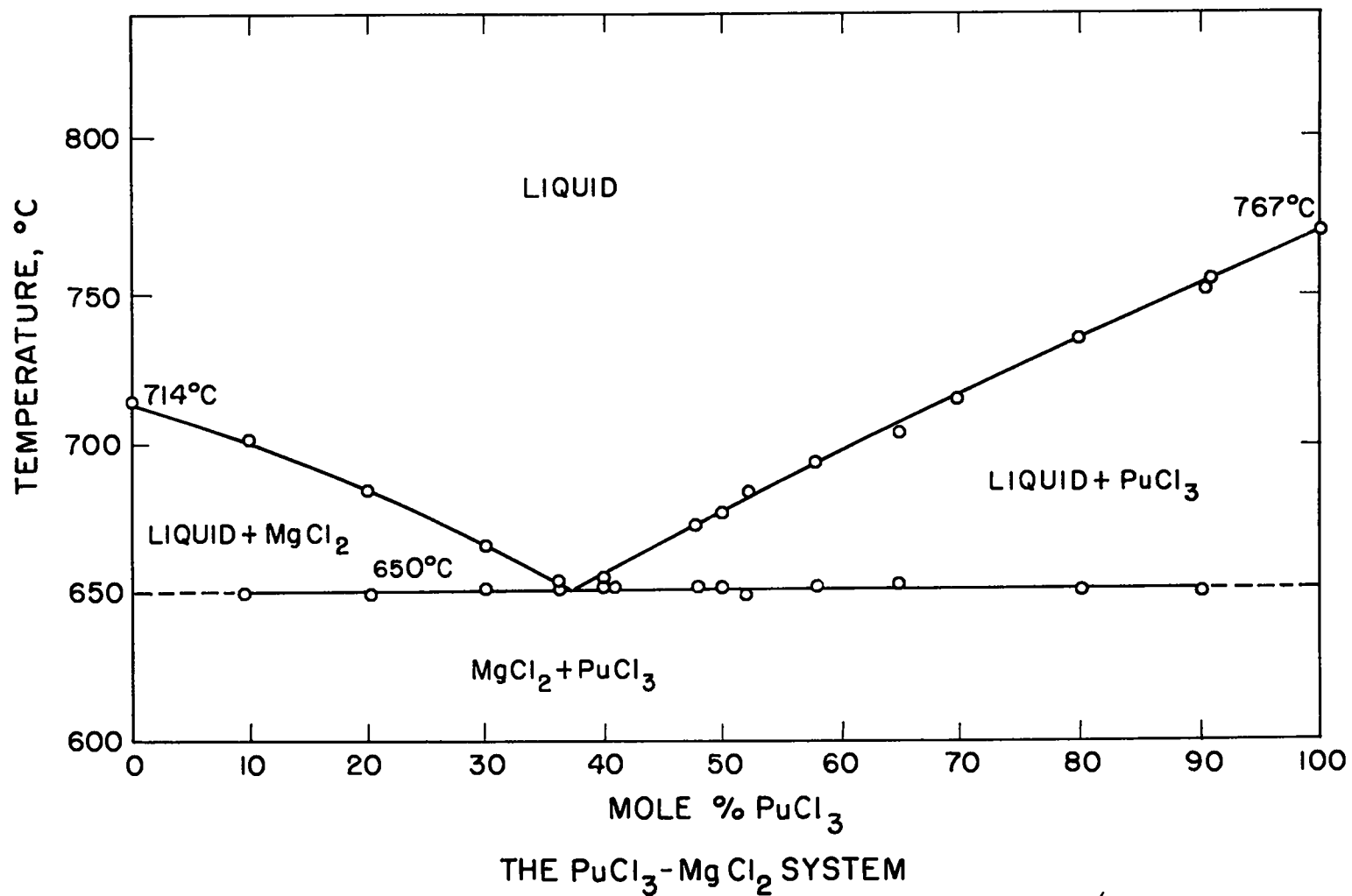


Fig. 8 (reference 6)
Eutectic point at 650° , 38 percent PuCl_3
(Reproduced with the permission of J. Phys. Chem.)

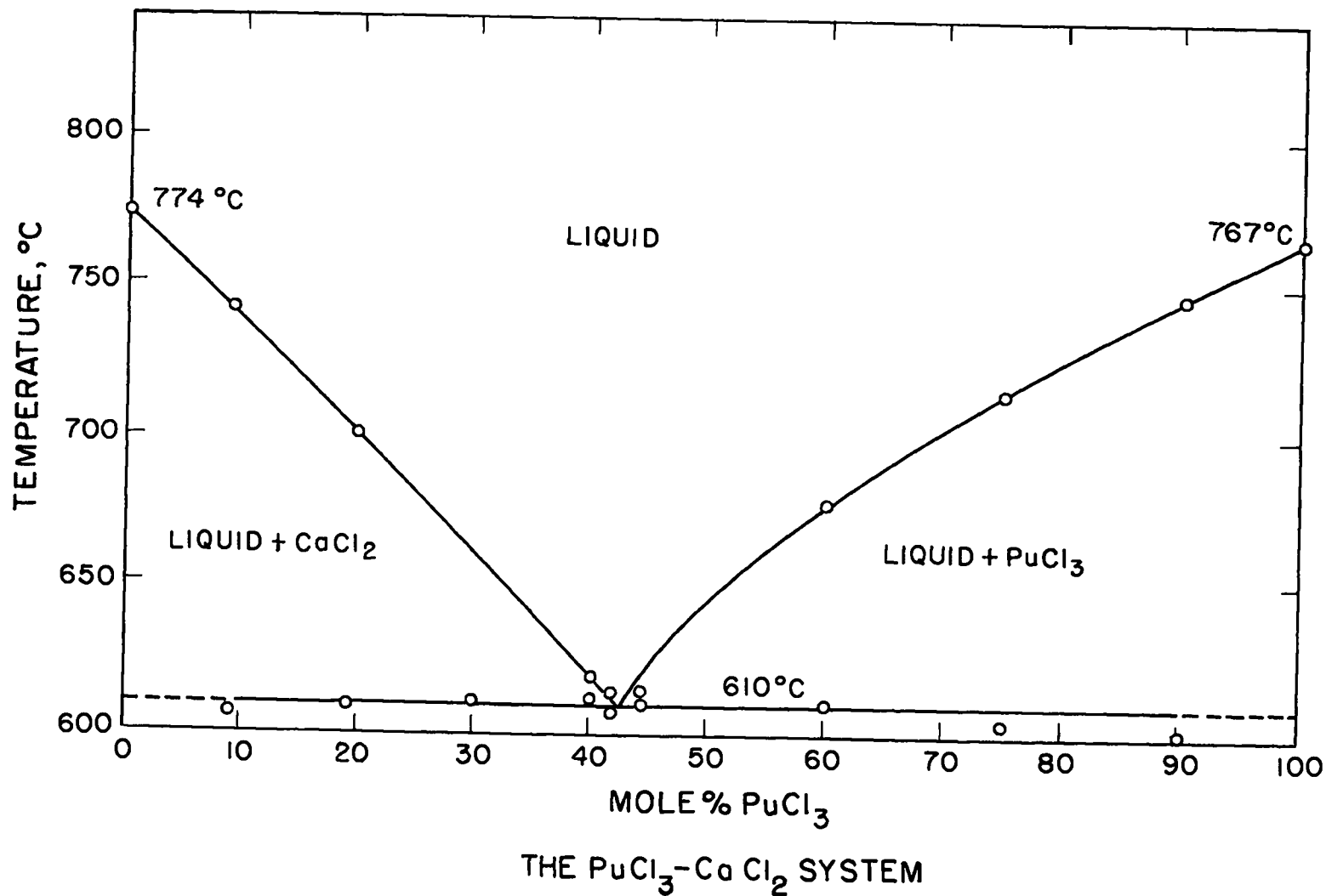


Fig. 9 (reference 6)
 Eutectic point at 610°, 43 percent PuCl_3
 (Reproduced with the permission of J. Phys. Chem.)

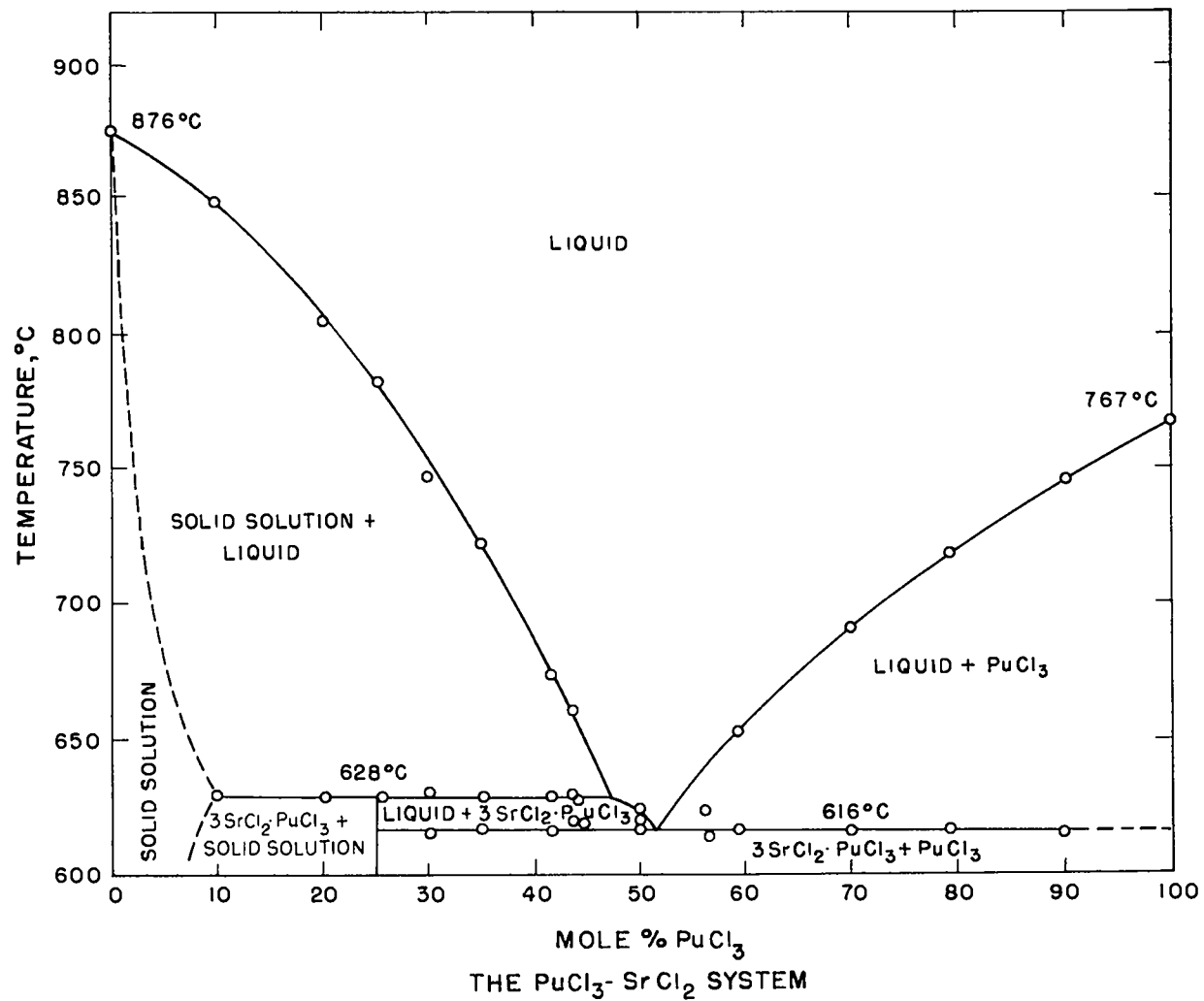


Fig. 10 (reference 6)
 Peritectic point at 628°, 47 percent PuCl₃
 Eutectic point at 616°, 52 percent PuCl₃
 (Reproduced with the permission of J. Phys. Chem.)

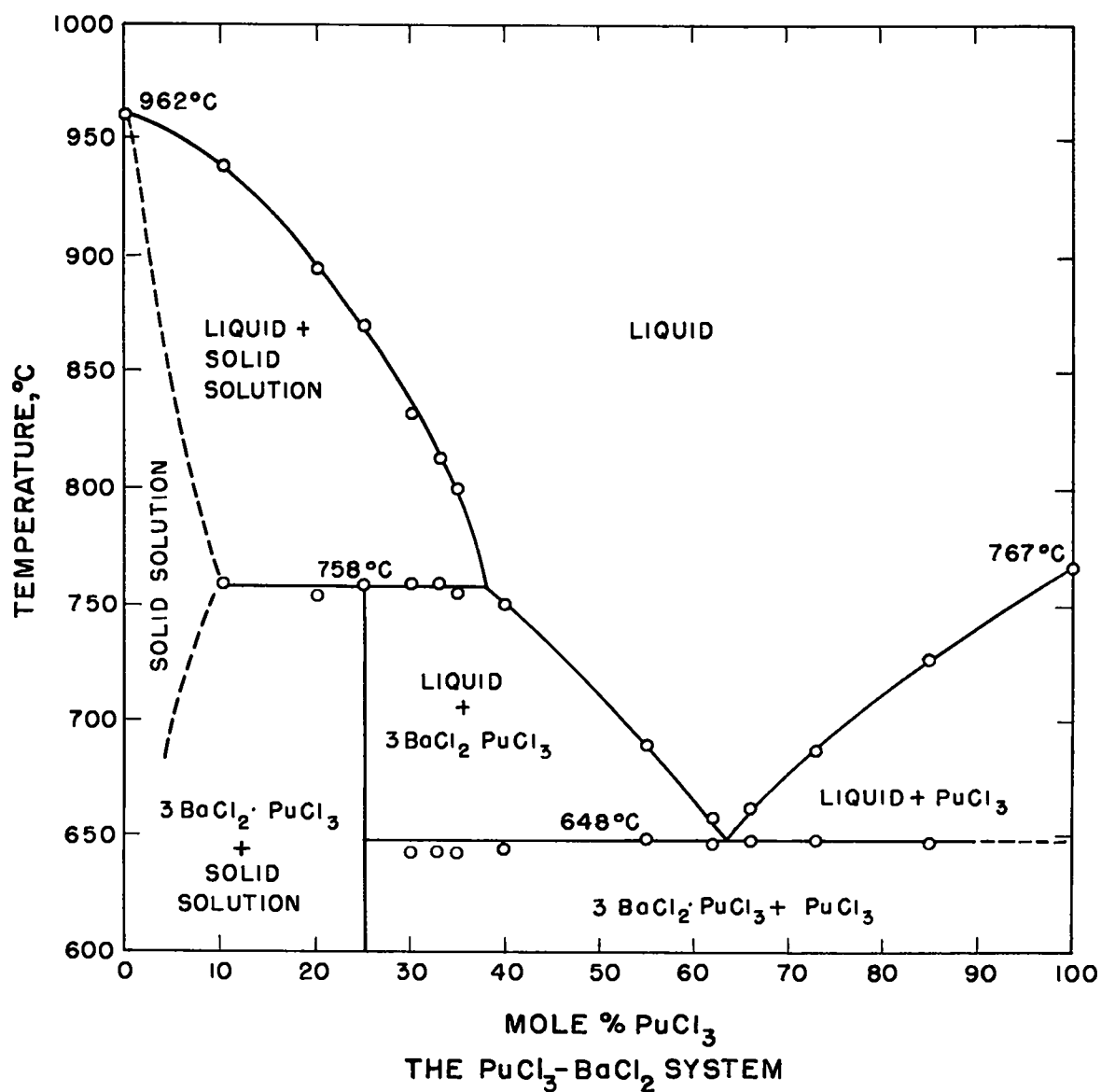


Fig. 11 (reference 6)
 Peritectic point at 758°, 38 percent PuCl_3
 Eutectic point at 648°, 64 percent PuCl_3
 (Reproduced with the permission of J. Phys. Chem.)

REFERENCES

1. C. J. Barton and R. A. Strehlow, "Phase Relations in the System LiF-PuF₃", "J. Inorg. and Nuclear Chem.", 18, 143-147 (1961).
2. C. J. Barton, J. D. Redman, and R. A. Strehlow, "Phase Equilibria in the Systems NaF-PuF₃ and NaF-CeF₃", "J. Inorg. and Nuclear Chem.", 20, 45-52 (1961).
3. C. W. Bjorklund, J. G. Reavis, J. A. Leary, and K. A. Walsh, "Phase Equilibria in the Binary Systems PuCl₃-NaCl and PuCl₃-LiCl", "J. Phys. Chem.", 63, 1774-1777 (1959).
4. R. Benz, Milton Kahn, and J. A. Leary, "Phase Equilibria of the Binary System PuCl₃-KCl", "J. Phys. Chem.", 63, 1983 (1959).
5. R. Benz and R. M. Douglass, "Phase Equilibria in the Binary Systems PuCl₃-RbCl and PuCl₃-CsCl", "J. Phys. Chem.", 65, 1461-1462 (1961).
6. K. W. R. Johnson, Milton Kahn, and J. A. Leary, "Phase Equilibria in Fused Salt Systems: Binary Systems of Plutonium(III) Chloride with the Chlorides of Magnesium, Calcium, Strontium, and Barium", "J. Phys. Chem.", 65, 2226-2229 (1961).