

LA-10197-MS

2. 3

CIC-14 REPORT COLLECTION  
REPRODUCTION  
COPY

Los Alamos National Laboratory is operated by the University of California for the United States Department of Energy under contract W-740-ENG-36

*Long-Term Exposure of  
Pressed Plutonium Oxide Heat Sources  
to Aquatic Environments*

LOS ALAMOS NATIONAL LABORATORY



3 9338 00318 6078

Los Alamos National Laboratory  
Los Alamos, New Mexico 87545

This work was supported by the US Department of Energy, Office of Special Nuclear Projects.

DISCLAIMER

This report was prepared as an account of work sponsored by an agency of the United States Government. Neither the United States Government nor any agency thereof, nor any of their employees, makes any warranty, express or implied, or assumes any legal liability or responsibility for the accuracy, completeness, or usefulness of any information, apparatus, product, or process disclosed, or represents that its use would not infringe privately owned rights. Reference herein to any specific commercial product, process, or service by trade name, trademark, manufacturer, or otherwise, does not necessarily constitute or imply its endorsement, recommendation, or favoring by the United States Government or any agency thereof. The views and opinions of authors expressed herein do not necessarily state or reflect those of the United States Government or any agency thereof.

LA-10197-MS

UC-33A

Issued: November 1984

# Long-Term Exposure of Pressed Plutonium Oxide Heat Sources to Aquatic Environments

R. C. Heaton  
J. H. Patterson  
S. T. Kosiewicz  
G. M. Matlack  
F. J. Steinkruger  
G. B. Nelson\*  
N. E. Vanderborgh  
K. P. Coffelt  
B. Herrera



\*National Regulatory Commission, Walnut Creek, CA 95690.

**Los Alamos** Los Alamos National Laboratory  
Los Alamos, New Mexico 87545

# LONG-TERM EXPOSURE OF PRESSED PLUTONIUM OXIDE HEAT SOURCES TO AQUATIC ENVIRONMENTS

by

R. C. Heaton, J. H. Patterson, S. T. Kosiewicz,  
G. M. Matlack, F. J. Steinkruger, G. B. Nelson,  
N. E. Vanderborgh, K. P. Coffelt, and B. Herrera

## ABSTRACT

Plutonium-238 oxide fuel pellets were exposed to water for 2.5 to 6.4 yr, and the concentration of plutonium in the water was monitored. Water composition and temperature were found to be important factors in determining the rate of plutonium release into the water. Typical release rates ranged from 10 to 40 ng/m<sup>2</sup>/s in cold fresh water and from 0.3 to 11 ng/m<sup>2</sup>/s in cold sea water. Release rates in sea water varied over time and sometimes were erratic. The plutonium release per unit area did not depend on the size of the PuO<sub>2</sub> source.

The released plutonium was in an extremely fine form, able to pass through 10 000 molecular weight cutoff filters. Apparent differences in the fuel pellet surfaces after exposure suggest that plutonium release is controlled by physical and chemical processes occurring at the solid-liquid interface. Release mechanisms and their implications are discussed.

---

## INTRODUCTION

Radioisotope thermoelectric generators, fueled with <sup>238</sup>PuO<sub>2</sub>, are used to power satellites and deep space probes when long-term, reliable power sources are needed and when other more conventional power supplies are unsuitable. Because these spacecraft function outside the earth's biosphere, the radioactive fuel sources offer no environmental risk under normal circumstances. However, if the spacecraft returned to earth through orbital decay, or if they failed to escape from earth because of a launch failure, significant amounts of plutonium could be released into the environment. The fuel containers have been designed to contain the radioactive fuel in all conceivable deposition situations, including reentry and launch pad explosions. Nevertheless, the Department of Energy continually seeks information on the behavior of the fuel

sources and their containments in simulated environments to aid in risk assessment and safety analysis efforts and to assist in the design of improved fuel structures and containments.

The experiments described in this report were intended to simulate the deposition of unclad plutonium oxide fuel pellets into aqueous environments. This situation corresponds to the worst possible case in which the containment of a fuel pellet is completely destroyed and the fuel pellet is exposed directly to water. Our experimental objective was to determine the amount of plutonium released into the water under a variety of conditions and to infer potential effects on the biosphere. In addition, such information may be useful in future radioisotope heat source designs. The experiments themselves were discussed during their implementation.<sup>1-4</sup> This report describes the experiments in their entirety and draws conclusions from the data.

## EXPERIMENTAL SECTION

Aquaria for these experiments, from Aquarium Systems, Inc., models CS25 and CS30, were equipped with both electrical heaters and refrigeration systems to maintain the desired operating temperature. Air bubblers were used to maintain water circulation within the chambers. Except for the glass fronts, the aquaria were constructed of plastic-coated plywood. The sides were extended 6 in. with 3/8-in.-thick Plexiglas, and the tops were covered with Plexiglas sheets. Vent holes in the tops were connected to the building's filtered exhaust system, and inlets were fitted with HEPA filters. Every joint and seam was sealed with silicone. These measures were undertaken to prevent the escape of airborne radioactive contamination from the aquaria into the surrounding work areas. The maximum volumes of the aquaria were approximately 90 or 110 L (29 gal.), depending on the aquarium model number.

Two types of water were used for these experiments. Deionized water was used as a fresh water simulant in half of the experiments. Simulated sea water (Instant Ocean™, a product of Aquarium Systems, Inc.) was used in the other half. Table A-I in the Appendix shows the composition of the sea water.

The fuel sources were pressed plutonium oxide (PPO) fuel pellets manufactured at Los Alamos National Laboratory, and the plutonium was 80 to 83% <sup>238</sup>Pu. Four of the pellets were pressed from a mixture of plutonium particle sizes (GROG), and pellet sizes ranged from approximately 6.1 to 64 g. Specifications for the fuel pellets are shown in Table A-II.

At the beginning of each experiment, a fuel pellet was placed in an aquarium on a pedestal about 2 in. above the tank bottom. The water levels in the aquaria were kept approximately constant by adding deionized water. Water samples were withdrawn periodically (weekly in most cases) and analyzed for plutonium concentration. At the conclusion of the experiments, the sources were removed and subjected to post-mortem analyses by photographic and metallographic techniques. Several aquaria were monitored after their sources were removed to observe any changes in the plutonium content of the water without the complicating influence of the fuel pellets. Experimental details are shown in Table A-III. Water samples from four of the aquaria were characterized by filtration through filters of varying sizes: 1.0- $\mu$ m Nuclepore™, 0.1- $\mu$ m Nuclepore™, and 10 000 molecular weight

cutoff Amicon™ filters. This filtration was done to gain some insight into the particle size distribution of the water-borne plutonium.<sup>5</sup>

Plutonium analyses were conducted by liquid scintillation counting in a Packard Tricarb™ scintillation counter. Filters were completely dissolved, and the resulting solutions were counted as described above. Nuclepore filters were dissolved with Protosol™, a commercially available formulation used to dissolve tissue samples. Amicon filters were dissolved by sealed digestion with 90% nitric acid.

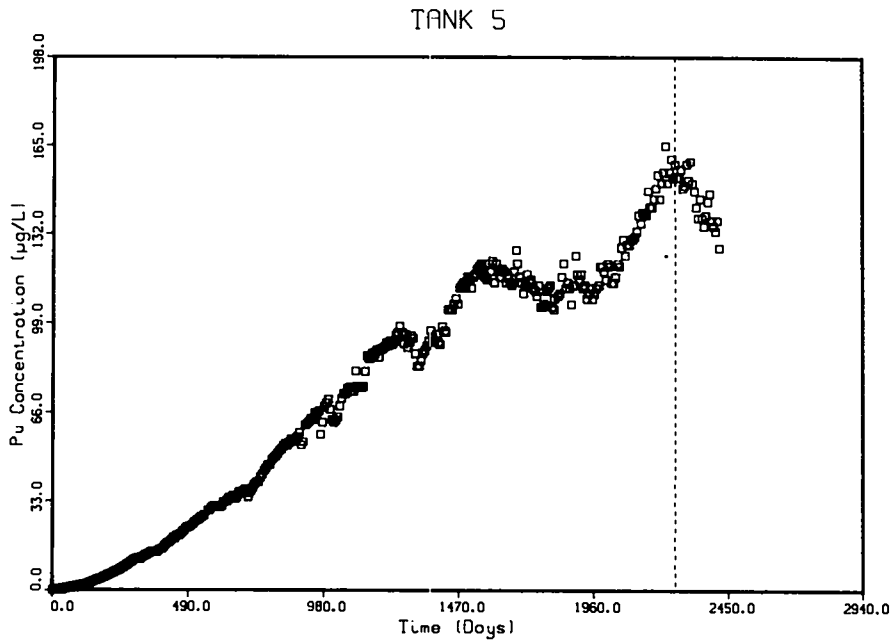
After they were removed from the aquaria, the sources were sectioned with a slow diamond saw and mounted in epoxy. The surfaces of the sections were ground smooth with 400- to 600-grit silicon carbide paper and then were polished with 0.3- $\mu$ m alumina on a nylon cloth. They were etched by exposing them for 35 min to a mixture of 27 mL of HBr, 3 mL of HCl, and 10 drops of HF. The surfaces were examined under green light by using a Zeiss Axiomat metallograph.

## RESULTS AND DISCUSSION

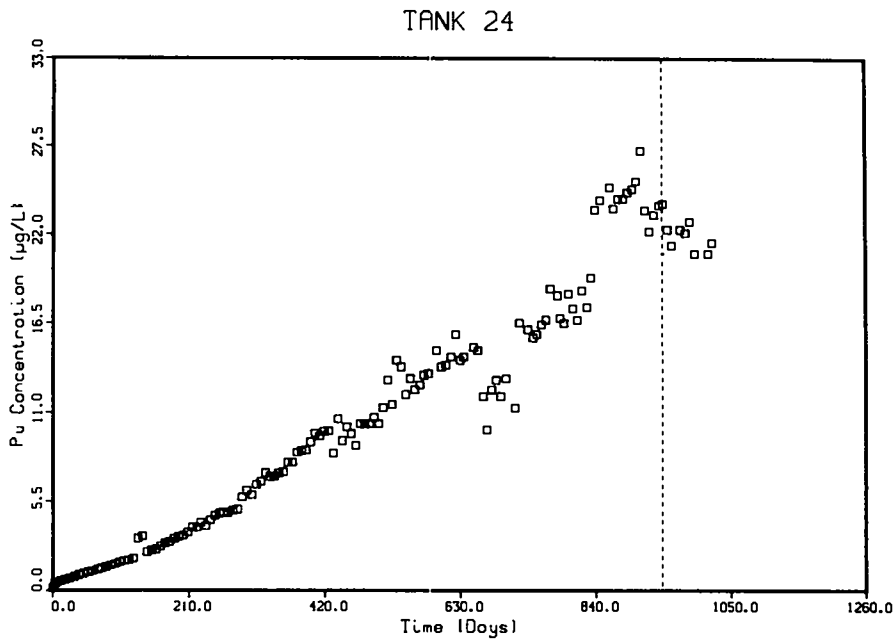
The plutonium concentrations found in the aquarium waters as functions of time are shown in Figs. 1 to 10. These are gross concentrations and do not account for the possible chemical or physical forms present. Because the aquarium volumes are constant, the concentrations can be easily converted to the total plutonium contents of the aquarium waters.

In the fresh water experiments, the plutonium contents seem to increase approximately linearly with time. There may be small dips in the concentration curves for all except the cold water tank with the GROG source (Fig. 2). This dip is much more pronounced in the warm water tank (Fig. 7) than in any others. Because we conducted only one warm fresh water experiment, it is difficult to say whether this observation is significant. Most large fresh water bodies are cold, so it probably is reasonable to model any fresh water deposition of a plutonium oxide source with a constant release rate.

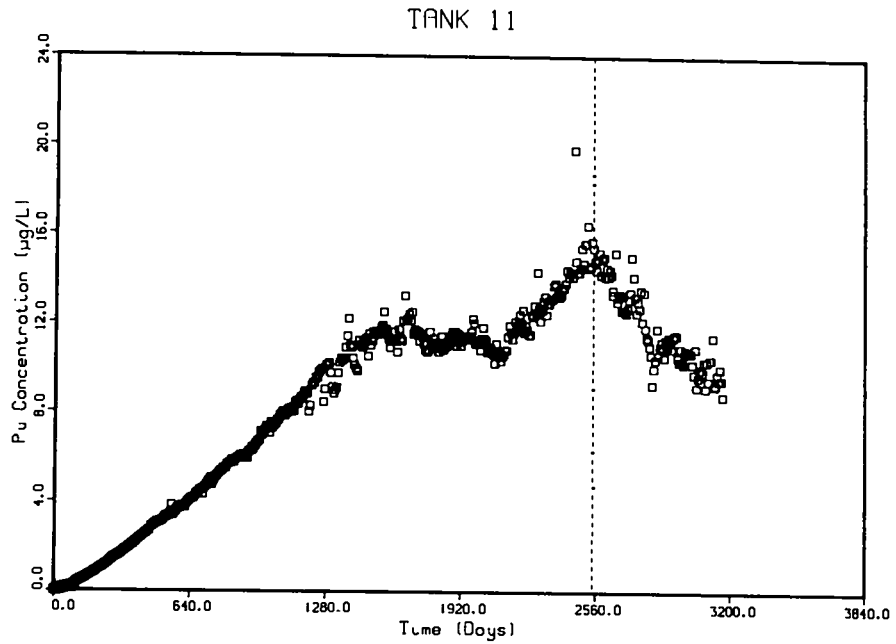
The sea water aquaria all showed erratic behavior, except for the warm water tank containing the 6-g source (Fig. 10). In aquaria containing cold sea water, the plutonium concentrations increased for a time and then decreased. The initial increases can be approximated reasonably well with linear curves, but the decreases tend to behave more complexly. Aquaria



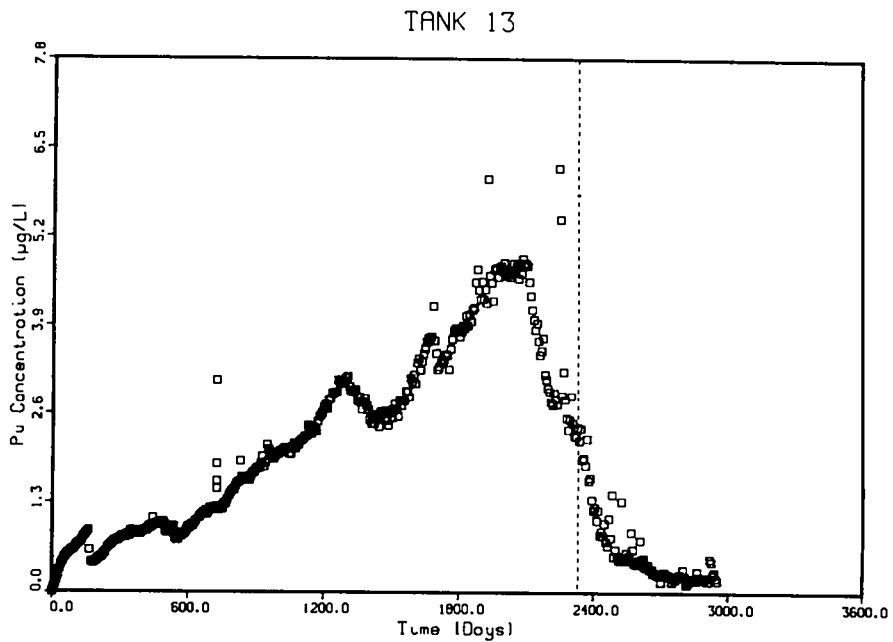
**Fig. 1.** Plutonium concentration versus time for aquarium number 5 (cold fresh water with a 63.2-g source). The vertical dashed line indicates removal of the source from the aquarium.



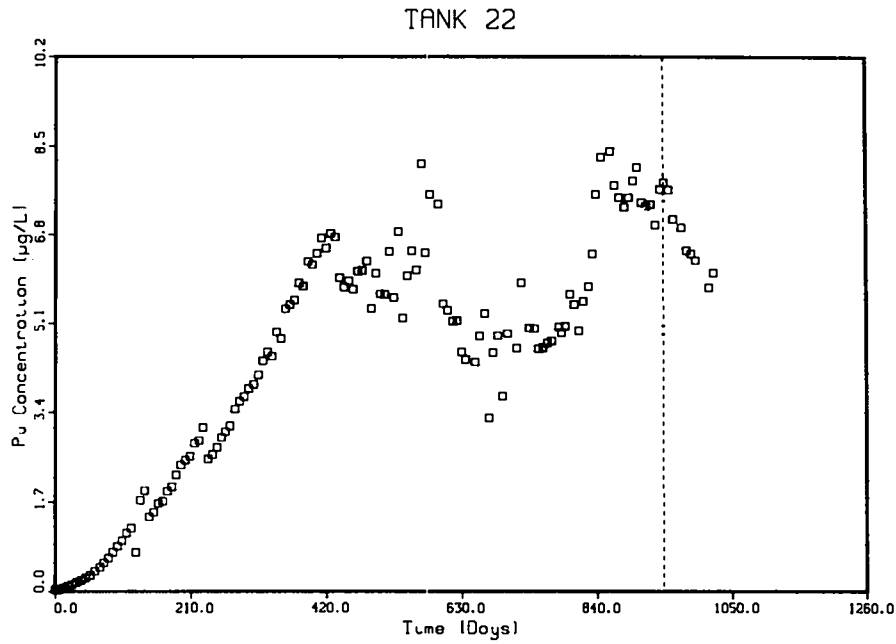
**Fig. 2.** Plutonium concentration versus time for aquarium number 24 (cold fresh water with a 33.6-g source). The vertical dashed line indicates removal of the source from the aquarium.



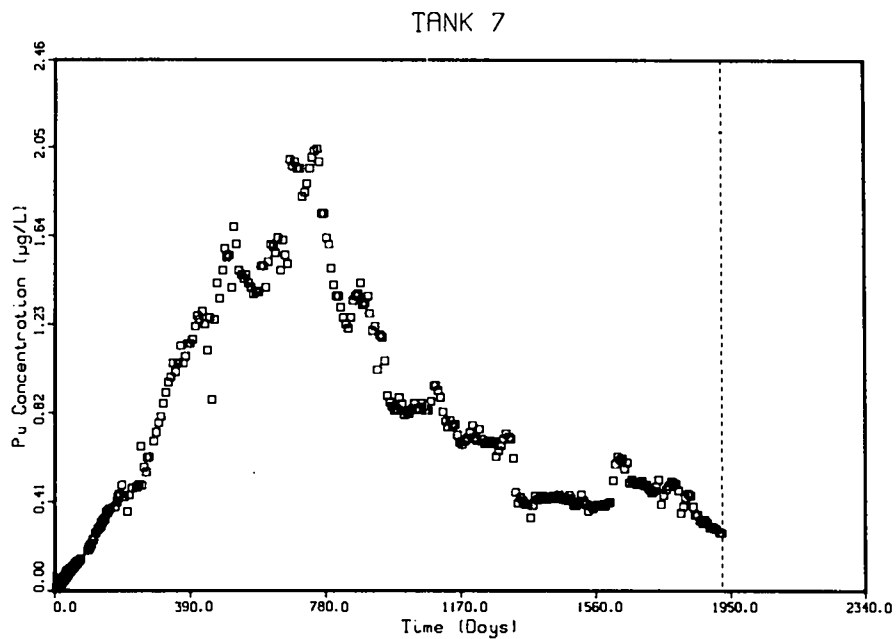
**Fig. 3.** Plutonium concentration versus time for aquarium number 11 (cold fresh water with a 6.3-g source). The vertical dashed line indicates removal of the source from the aquarium.



**Fig. 4.** Plutonium concentration versus time for aquarium number 13 (cold sea water with a 63.2-g source). The vertical dashed line indicates removal of the source from the aquarium.

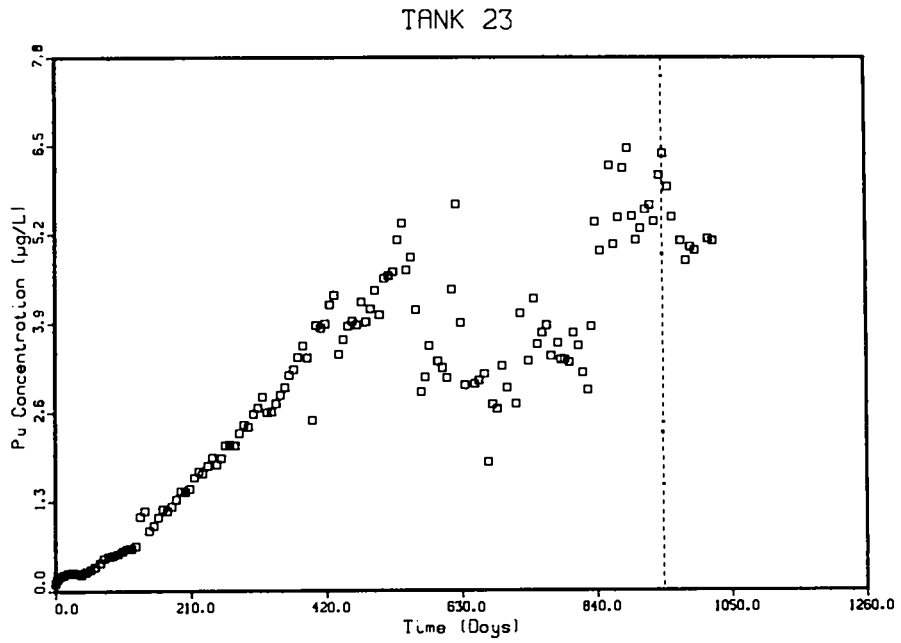


**Fig. 5.** Plutonium concentration versus time for aquarium number 22 (cold sea water with a 33.6-g source). The vertical dashed line indicates removal of the source from the aquarium.

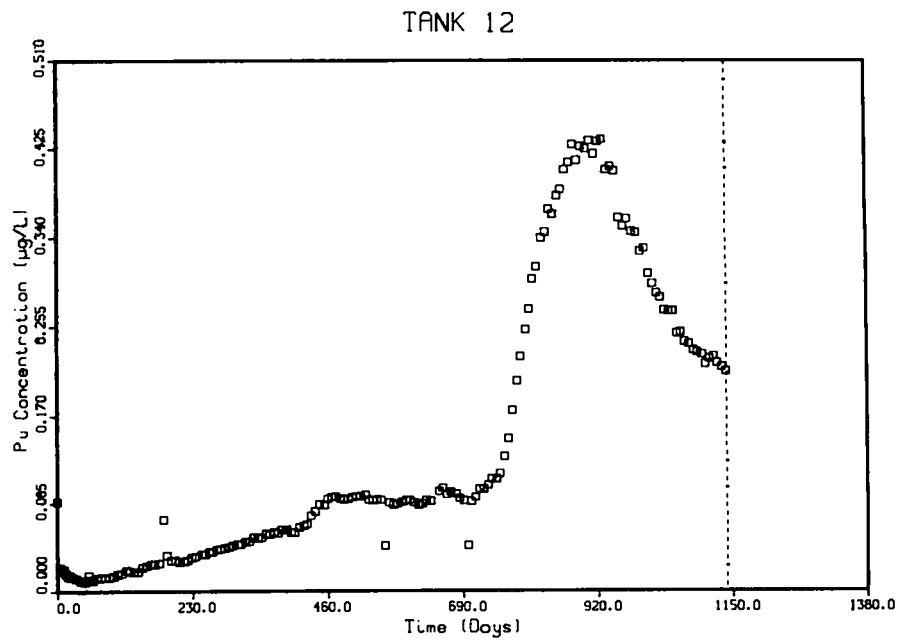


**Fig. 6.** Plutonium concentration versus time for aquarium number 7 (cold sea water with a 6.1-g source). The vertical dashed line indicates removal of the source from the aquarium.

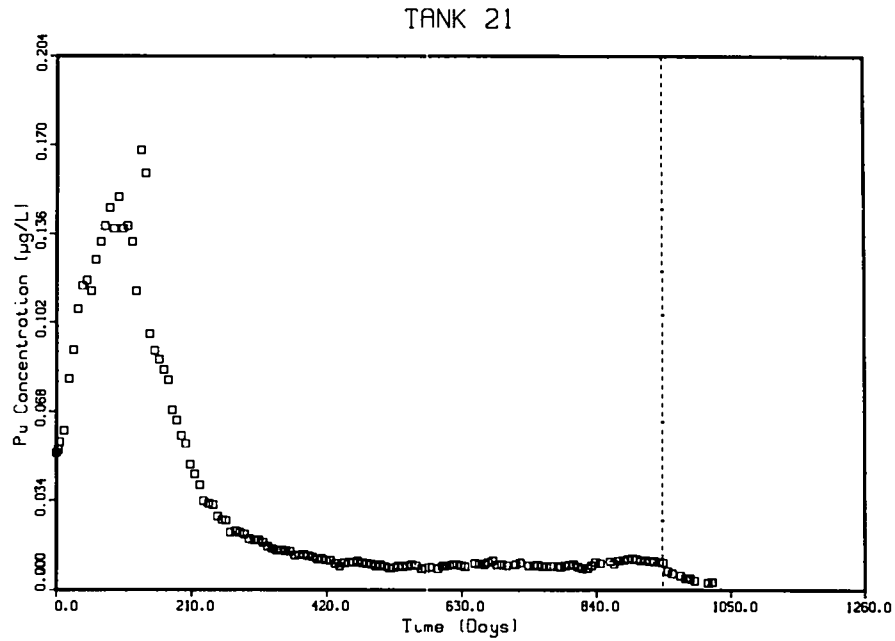




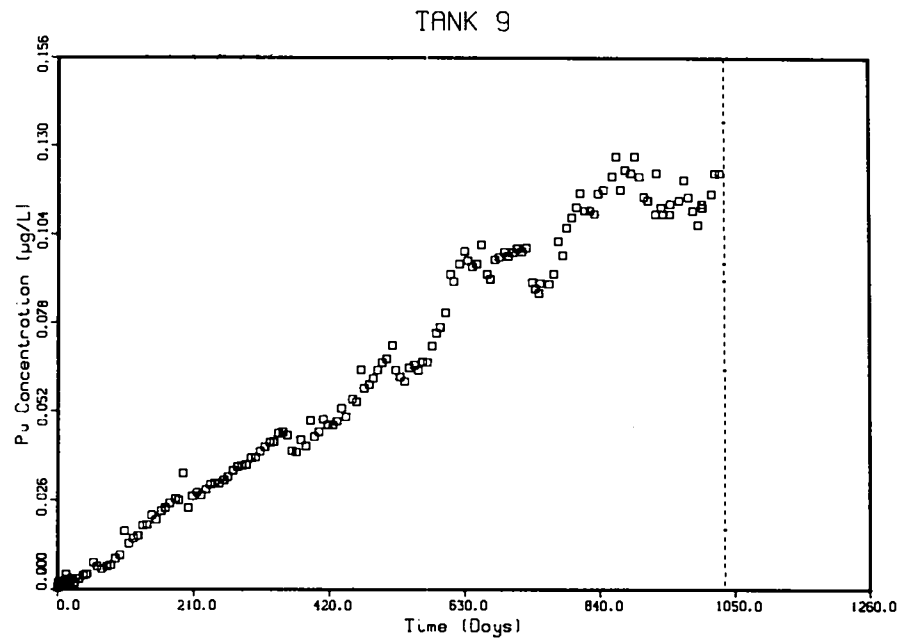
**Fig. 7.** Plutonium concentration versus time for aquarium number 23 (warm fresh water with a 33.5-g source). The vertical dashed line indicates removal of the source from the aquarium.



**Fig. 8.** Plutonium concentration versus time for aquarium number 12 (warm sea water with a 63.2-g source). The vertical dashed line indicates removal of the source from the aquarium.



**Fig. 9.** Plutonium concentration versus time for aquarium number 21 (warm sea water with a 33.6-g source). The vertical dashed line indicates removal of the source from the aquarium.



**Fig. 10.** Plutonium concentration versus time for aquarium number 9 (warm sea water with a 6.2-g source). The vertical dashed line indicates removal of the source from the aquarium.

containing warm sea water showed less scatter but similar patterns. The noteworthy exception is the warm sea water with the 64-g PPO source (Fig. 8): a large, nearly symmetrical peak occurred late in the experiment. Although this behavior is difficult to explain, we think it is caused by a change in the surface area or surface condition of the source. The times required to reach the peaks of the concentration curves were highly variable and do not seem to fit any pattern.

In most cases, the apparent plutonium release rates from the fuel pellets are not constant. Consequently, calculating average release rates from the plutonium concentration in the water at any given time can give misleading results. The fact that the plutonium concentration in the water decreases at various times during the experiment indicates that plutonium removal processes must be at work, so the transfer of plutonium from the water to the walls of the aquarium, the sediment, or elsewhere occurs at a significant rate. The erratic data observed in several aquaria indicate that at least one important rate-determining factor is not being controlled in these experiments. These observations imply that plutonium release into the water is not a simple, homogeneous process. For these reasons and others discussed later, we hypothesize that the release is

partially a physical process that depends on the surface conditions at the fuel pellet-water interface.

Within the uncertainty of the data, the power level (size) of the source does not seem to be an important factor in determining the release rate per unit area. This tentative conclusion is in contrast to results from terrestrial experiments, in which large fuel pellets can exhibit high release rates during rainfall. These high release rates probably are caused by the action of boiling water on the pellet surface, which results in physical ejection of particles. However, in the present experiment the water has a sufficient heat capacity to cool the surface of the source below the boiling point. Although significant thermal gradients are present, the violent surface conditions that can exist during a terrestrial rainfall do not occur.

Curve slopes were determined for various portions of the curves by manual curve-fitting techniques (see Table I). The slopes are presented in terms of plutonium concentration per time normalized to the geometric surface area of the sources. Because each aquarium contained 75 L of water, the concentration values can be converted directly to the total plutonium contents of the waters. Two slopes are listed: the slope of the curve early in the experiment (before the

TABLE I. Observed Release Rates

Aquarium Number	Source Mass (g)	Water <sup>a</sup>	Rates 1 <sup>b</sup>		Rates 2 <sup>d</sup>	
			(pg/L) (m <sup>2</sup> /s)	(ng/m <sup>2</sup> /s) <sup>c</sup>	(pg/L) (m <sup>2</sup> /s)	(ng/m <sup>2</sup> /s) <sup>c</sup>
5	63.2	cold fresh	527	39.5	399	29.9
24	33.6	cold fresh	230	17.2	208	15.6
11	6.3	cold fresh	201	15.1	142	10.7
13	63.2	cold sea	12.9	0.970	6.0	0.453
22	33.6	cold sea	153	11.4	68.1	5.11
7	6.1	cold sea	77.4	5.80	3.4	0.258
23	33.5	warm fresh	85.7	6.43	51.4	3.86
12	63.2	warm sea	0.816	0.0613 <sup>e</sup>	0.914	0.069 <sup>e</sup>
21	33.6	warm sea	11.2	0.838	0.095	0.007
9	6.2	warm sea	3.06	0.229	3.06	0.229

<sup>a</sup>Cold = 10°C; warm = 35°C; fresh = deionized water; sea = Instant Ocean™ simulated sea water.

<sup>b</sup>Release rate observed by fitting the initial portion of the concentration curve to a straight line.

<sup>c</sup>Calculated assuming 75-L water volume.

<sup>d</sup>Release rate determined by the ratio of the final concentration to elapsed time.

<sup>e</sup>Does not reflect a substantially larger release rate late in the experiment.

plutonium concentrations began to decrease) and the slope obtained by dividing the final plutonium concentration by the elapsed time of the experiment. To evaluate the potential environmental impacts of short exposures, the early slopes are more useful, whereas the final slopes probably are more appropriate for long-term effects.

Table I demonstrates that the water composition significantly affects the plutonium release rates. Under comparable conditions, the sea water aquaria showed significantly lower concentrations of plutonium than did the fresh water aquaria. Water temperature also is important, with colder water having higher plutonium concentrations. These observations agree with those made in earlier experiments.<sup>6,7</sup> In one case, release rates apparently were higher in fresh water than in normal saline at body temperature.<sup>6</sup> In that study, which examined the "solubility" of plutonium oxide particulates, the apparent release rates were a little higher than in the present study (16.8 to 45.0 ng/m<sup>2</sup>/s in fresh water and 3.3 to 13.1 ng/m<sup>2</sup>/s in normal saline). We attribute the differences between those rates and ours to uncertainties in the surface areas of the sources and to differences in how the rates were calculated. In a separate study, the apparent release rate in 1 M perchloric acid was between 0.73 and 9.5 ng/m<sup>2</sup>/s.<sup>7</sup> In this interesting case the acid, which we might expect to enhance the solubility of the plutonium, actually gave rise to apparent release rates substantially lower than those in the fresh water case. Although the temperature and compositional dependencies may seem strange, the present experimental results are entirely consistent with those of these past investigations.

If the concentration buildup of plutonium in the aqueous phase were a simple, one-step process, the plutonium concentration should increase with temperature. Because this increase does not occur, the net transfer cannot be a simple process. One possible explanation for this phenome-

non is that, once released from the source, the plutonium may be removed from the water by subsequent reactions that have higher temperature coefficients than the release itself. If true, the plutonium would be removed faster in the warm water aquaria, with lower concentrations in the water and a smaller apparent release rate. This also would lead to more plutonium on the walls and in the sediments in the warm water aquaria. In another experiment conducted in glass chambers, in which the same temperature dependence of transfer rate was observed, the amounts of plutonium on the walls of the chambers and in the sediments were measured at the conclusion of the experiment.<sup>8</sup> The expected plutonium excesses in the sediments and on the walls were not observed. Thus, it appears that subsequent reactions cannot be invoked to explain the temperature dependencies of the apparent release rate. The plutonium apparently is not escaping from the source as rapidly in the warm water as in the cold water aquaria, or in the salt water as in the fresh water. Thus, the controlling factors must exert their influences at the surface of the source and not in the bulk of the water phase. This may explain the erratic nature of some of the observations, because the conditions at a solid-liquid interface are difficult to control experimentally.

Water from four of the aquaria, those containing the 33.3-g GROG sources, were filtered to determine the particle size distribution of the plutonium (see Table II). Three filters were used, a 1.0- $\mu$ m pore Nuclepore<sup>TM</sup> filter, a 0.1- $\mu$ m pore Nuclepore filter, and a 10 000 molecular weight cutoff Amicon filter. The Nuclepore filters were used whenever possible because of their well-defined pore size distribution and because they can be easily dissolved for analysis. For pore sizes smaller than 0.05  $\mu$ m, the flow rates are so slow that filtration of samples becomes very time consuming. The Amicon filters, though not having as well-defined pore size distributions as the Nuclepore filters, have much more rapid flow

TABLE II. Filtration Results

Aquarium Number	Conditions	1.0- $\mu$ m Filter <sup>a</sup> (% Retained)	0.1- $\mu$ m Filter <sup>a</sup> (% Retained)	10 K MWCO Filter <sup>b</sup> (% Retained)	Total Pu ( $\mu$ g/L)
21	35°C sea water	25	10	95	0.01
22	10°C sea water	1	1	15	5.5
23	35°C fresh water	2	2	3	4.9
24	10°C fresh water	6	5	7	14.6

<sup>a</sup>Nuclepore<sup>TM</sup> filter.

<sup>b</sup>Amicon PM-10 filter.

rates for equivalent pore sizes. The pore sizes of the Amicon filters are described in molecular weight of a chemical standard rather than in terms of a pore diameter. In terms of spherical plutonium oxide particles, the 10 000 molecular weight standard would correspond to approximately a 3.3-nm diameter. In performing these filtrations, we experienced some difficulty with sample reproducibility. Excellent recoveries could be obtained for total radioactivity when filters and filtrates were measured and compared with the original aliquot, but considerable variations in the percentage of plutonium retained on the filters were observed with samples from the aquaria. This variability probably was caused by occasional "large" particles of plutonium oxide, containing enough activity to seriously affect the total count but present in few enough numbers to be sampled nonreproducibly. Consequently, although the percentage of plutonium retained on a filter could be determined with confidence for a given sample aliquot, considerable variation was observed among different aliquots from the same tank. In spite of this limitation, some important conclusions can be drawn from Table II.

The values in Table II represent the percentage of the radioactivity in the original sample aliquot retained on the filter. The fact that the 0.1- $\mu\text{m}$  filter sometimes had lower retentions than the 1.0- $\mu\text{m}$  filter attests to the variability among sample aliquots and to the precision of the measurements. Interestingly, Table II shows that most of the plutonium passes through all the filters. The one possible exception is the 10 000 molecular weight cutoff filter for tank 21, which shows 95% retention. In fact, the gross plutonium count for this sample was more than 10 times that for any other aliquot from tank 21. Probably one or more large particles of plutonium oxide in this sample contributed to its high count and were retained on the filter. Thus, the retention for this sample may be anomalously high. One conclusion to be drawn from Table II is that most plutonium particulates in the water are exceedingly fine. A particle that can pass through a 3.3-nm filter is so small that it may possess some characteristics of both particles and solutes. How to model the transport of the released plutonium remains an open question. Further characterization of the plutonium is required, which should be one focus of future experiments.

Metallographic examination of the sources after the conclusion of the experiment revealed nothing unusual. However, etching the surfaces did show some interesting differences among the

sources. This etching procedure, which used a mixture of HBr, HCl, and HF, normally is done to reveal the grain structure of the source material. In the sea water samples, the etching attacked the surfaces at the ends and circumferences of the pellets to depths of 300  $\mu\text{m}$  for the warm water pellet and 50  $\mu\text{m}$  for the cold water pellet (Figs. 11 and 12). This behavior was not observed for the pellets exposed to fresh water nor for fracture surfaces within the sea water pellets. The significance of these observations is unclear. There are some apparent differences in the surfaces of the pellets, but the amount of plutonium in the affected surface layers is many times that observed in any of the aquaria. One might ask about the nature of the material removed by the etchant. Could the sea water leave deposits in and around the grain boundaries that later would be removed by etching? If this were so, could these deposits trap the released plutonium and prevent its escape from the pellet into the bulk of the solution? Such a hypothesis could explain much of the plutonium release phenomena that we observed during these experiments. However, we require some direct evidence before we can be satisfied with this explanation. The observations are consistent with our contention that the controlling processes are surface phenomena and not solution reactions.

Plutonium can be released from the fuel pellet by chemical or physical processes. If the release occurred primarily by chemical processes, the dependence of the release rate on water composition might be easily explained. However, the inverse temperature dependence and the variable plutonium concentration versus time behaviors are incompatible with a strictly chemical mechanism. Chemical dissolution of the plutonium from the surface of the fuel pellet would require a positive temperature coefficient, which was not observed, or a sequence of consecutive reactions to explain the inverse temperature dependence. This latter situation would lead to larger amounts of plutonium in the sediment or on the walls of the container, because redeposition of all the excess plutonium on the source is unlikely. Since we did not observe such an excess, we conclude that a strictly chemical mechanism does not describe the experimental system.

Physical release mechanisms, all assuming radiation damage as the underlying cause, have been discussed in the literature.<sup>9-13</sup> Cllnard and Rohr note that  $^{238}\text{PuO}_2$  undergoes spontaneous fragmentation with the release of particles ranging from a few millimeters to less than 100 nm.<sup>9</sup>

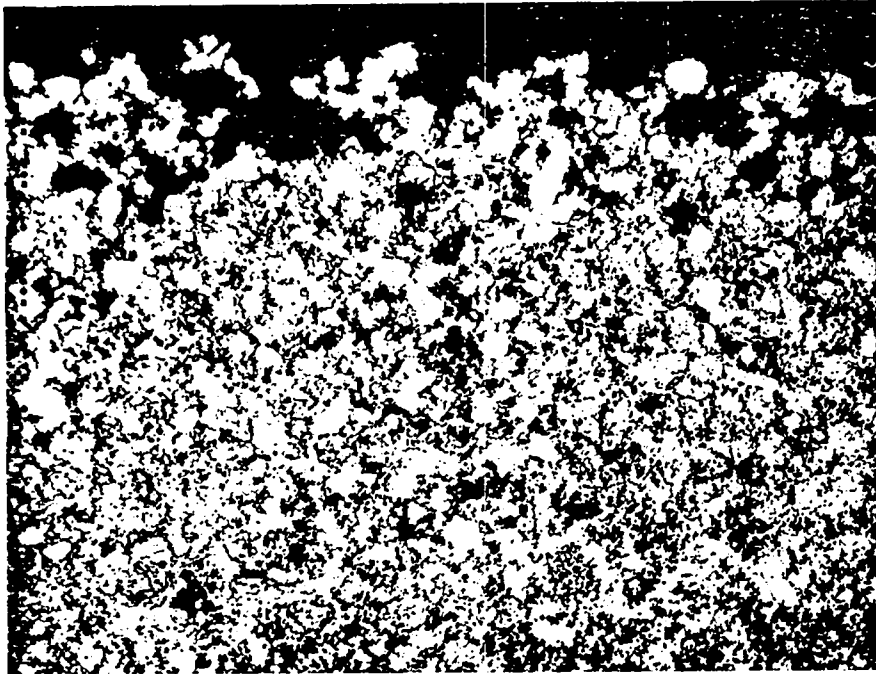


Fig. 11. A section of PuO<sub>2</sub> pellet number ET2-6 after etching. This source was exposed to simulated sea water at 35°C for 943 days. The effects of the etching treatment are clearly visible at the top edge of the photomicrograph. The magnification is 50X.

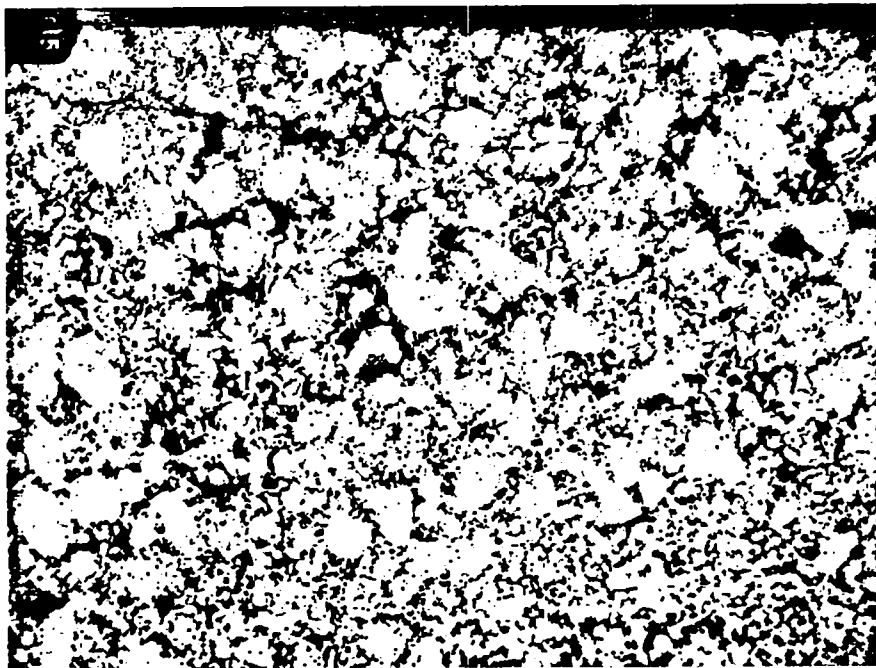


Fig. 12. A section of PuO<sub>2</sub> pellet number ET2-4 after etching. This source was exposed to fresh water at 35°C for 943 days. Examination of the edge of the source, at the top of the photomicrograph, reveals no evidence of attack by the etching solution. The magnification is 100X.

Such behavior was not observed for  $^{239}\text{PuO}_2$ . They considered thermal stresses, lattice damage, and radiolysis of the surrounding medium as possible controlling factors but were unable to pinpoint any of these as solely responsible for the  $\text{PuO}_2$  fragmentation. Fleischer<sup>10</sup> and Fleischer and Raabe<sup>11-13</sup> published four articles in which they discussed the fragmentation and dissolution of  $\text{PuO}_2$  particles. They noted four possible mechanisms. (1) Recoil nuclei may occur in unusual lattice positions or with unstable valence states that are readily susceptible to leaching by whatever medium the plutonium is in. (2) Water may retard recoil nuclei so that they may come to rest within the pore structure of the solid and thus be available for transport into the surrounding medium. (3) The radioactive decay process may leave recoil damage tracks in the surface of the solid, thus allowing rapid diffusion of soluble species to the surface. (4) The damage created by recoil nuclei may result in fragmented regions on the surface of the solid that later are loosened and mobilized by the liquid. Two of these mechanisms were shown to be operative under various conditions: mechanism 4 under dry conditions and mechanism 2 under wet conditions.<sup>13</sup> The discussion of experimental results under wet conditions is particularly interesting because the authors observed particles containing from 50 to 10 000 plutonium atoms in a power law distribution, with the largest particles being least abundant.<sup>11</sup> These are extremely small particles that would pass through most membrane filters. The authors noted that plutonium could be dissolved from the surface of the solid and then undergo coagulation reactions in the liquid phase, but that neither the observed size distribution nor the time behavior was consistent with current coagulation theories.

If the release mechanism is primarily a physical one, the released plutonium should be in the form of  $\text{Pu(IV)}$ , because particles ejected from the source would be  $\text{PuO}_2$ . Adams et al., in a study of the solubility of  $^{238}\text{PuO}_2$  derived from microspheres, suggested that the plutonium in the water was present as colloidal  $\text{Pu(OH)}_4$ , but that it might also be present, at least partially, in very small fragments of  $\text{PuO}_2$ .<sup>14</sup> In the same study, the authors attributed erratic results to spallation of small particles of  $^{238}\text{PuO}_2$  not uniformly distributed in the water. These notions were based on inferences from filtrations and results of plant and animal uptake experiments. A different interpretation was noted by Bondiotti and Reynolds, who studied solutions contacted

with high-fired  $\text{PuO}_2$  while also analyzing for plutonium in different oxidation states.<sup>15</sup> They observed that 95% of the soluble plutonium in a neutral, dilute carbonate (approximately  $10^{-4}$  M  $\text{NH}_4\text{HCO}_3$ ) solution contacting plutonium dioxide microspheres was  $\text{Pu(V)}$  or  $\text{Pu(VI)}$  and that only 5% behaved as  $\text{Pu(IV)}$ . Bondiotti and Sweeton elaborated on this work in a later publication.<sup>16</sup> They noted that during the initial contact the solution phase plutonium was dominated by a "refractory" species displaying the properties of plutonium polymer. The presence of an oxidized plutonium species, whose rate of appearance was nearly constant during the experiment, also was observed. The overall experiment was described as having an initially high and erratic rate, probably because of the refractory species, and a subsequently slower rate because of the oxidized species. The use of isotopic tracers revealed that oxidation occurs near the oxide surface (probably caused by radiolysis) and not in the bulk of the solution. The authors hypothesized that the actual dissociation of plutonium from the oxide surface was physical and that oxidation, induced by radiolysis effects, took place during the transfer from the solid surface to the bulk solution phase.<sup>16</sup>

These discussions, when considered in the context of our own observations, suggest to us that the controlling mechanism for the release of plutonium from the fuel pellets is a physical one, much like the fourth model suggested by Fleischer and Raabe.<sup>11</sup> Thus, we can envision alpha-decay-induced fragmentation occurring in the surface layers of the solid. Particles then may be loosened or etched by the water, resulting in particulate releases into the liquid phase. This may explain the exceedingly small particle sizes observed and the etching behavior obtained during the post-mortem examination of the source. The time and temperature dependencies require additional controlling factors. We think that reactions may occur at the surface of the solid that tend to stabilize the damaged area against release of particles into the liquid phase. Such reactions would progress faster at higher temperatures and would explain the inverse temperature dependence of the release rate. The composition of the liquid phase also may have a strong influence on such surface reactions, which would explain the observed dependence of the release rate on the water composition. In sea water, the deposition of compounds from the sea water in the surface layer might trap plutonium otherwise subject to release and thus give an apparently low release rate.

The observation by Bondietti and Sweeton of two distinct release rates<sup>16</sup> is consistent with our experience. Patterson et al. reported that the initial dissolution rate of plutonium oxide is higher and more erratic than the subsequent, longer term rate, which is relatively constant.<sup>6</sup> The initial, rapid release rate was attributed to reactions of the oxide with the solution. A related mechanism suggested by Bondietti and Sweeton<sup>16</sup> involving recoil aggregates seems more appropriate. Decay events occurring after calcination of the source would cause a buildup of recoil-derived fragments at the surface. These would be released to the aqueous phase as colloidal material when the source was introduced into water. Such colloidal material would behave, initially at least, as PuO<sub>2</sub>. Because we have never determined the oxidation states of the released plutonium, nor attempted to determine the colloidal properties of the initially released plutonium, we can only speculate on the validity of these mechanisms. There is an obvious need for fundamental studies of the nature and chemical composition of the surface of the fuel pellet and the solid-liquid interactions taking place there. Also needed are studies to determine the oxidation state and potential colloidal properties of the released plutonium.

## CONCLUSIONS

Experiments were conducted in which <sup>239</sup>PuO<sub>2</sub> pellets of varying sizes were exposed to aqueous environments for extended periods. The results showed that water composition and water temperature are important factors in determining the apparent release rate of plutonium into the water. In cold fresh water experiments, the plutonium levels in the water increased approximately linearly with time, with release rates ranging from 10 to 40 ng/m<sup>2</sup>/s. The one warm fresh water system gave similar but more erratic behavior with a release rate between 3.8 and 6.5 ng/m<sup>2</sup>/s. Sea water results were more variable, with typical plutonium concentrations increasing approximately linearly for a time and then decreasing irregularly thereafter. Release rates ranged from 0.3 to 11 ng/m<sup>2</sup>/s for cold sea water and from 7 to 900 pg/m<sup>2</sup>/s for warm sea water. The length of time necessary to achieve the maximum value was variable and did not follow any obvious pattern. The size (power level) of the PuO<sub>2</sub> source was not an important factor affecting plutonium release per unit area.

The plutonium released into the water is extremely fine, able to pass through a 10 000 molecular weight cutoff Amicon filter (3.3-nm pore size). Such material may exhibit behavior typical of particles, solutes, or both, depending on its form. An important subject of future research should be better characterization of the released plutonium.

Release rates correlate inversely with the temperature and salinity of the water phase, suggesting that the release mechanism is not a one-step chemical process. Evidence presented contradicts models that assume sequential homogeneous reactions to control mobilization and plutonium removal from the liquid phase. Differences in the surface structures of the fuel pellets observed at the conclusion of the experiments suggest that plutonium release may be controlled by the surface condition of the fuel pellet. The model that seems to best fit the observations is one based on alpha-decay-induced fragmentation of the surface layer of the solid, followed by loosening and etching of the resulting particles by the liquid medium. The latter process may depend on water temperature and composition. Such a model can explain the small size of the released plutonium particles and the temperature and salinity dependencies observed. However, direct evidence is needed to verify such a mechanism.

## ACKNOWLEDGMENTS

We are most grateful to C. C. Land, D. Pavone, M. A. Casey, and J. M. Herrera, who performed the post-mortem examinations of the plutonium oxide sources and who noticed the important differences among the surfaces of sources exposed to different water types. We also wish to acknowledge E. M. Hodge, J. Bubernak, and M. T. Romero, who performed many of the plutonium analyses.

## REFERENCES

1. G. R. Waterbury, "Environmental and Radiological Safety Studies: Interaction of <sup>239</sup>PuO<sub>2</sub> Heat Sources with Terrestrial and Aquatic Environments, October 1—December 31, 1979," Los Alamos Scientific Laboratory report LA-8285-PR (March 1980).



2. G. M. Matlack, J. H. Patterson, and N. D. Stalnaker, "Environmental and Radiological Safety Studies: Interaction of  $^{238}\text{PuO}_2$  Heat Sources with Terrestrial and Aquatic Environments, July 1—September 30, 1982," Los Alamos National Laboratory report LA-9607-PR (December 1982).
3. J. H. Patterson, F. J. Steinkruger, and G. M. Matlack, "Interaction of  $^{238}\text{PuO}_2$  Heat Sources with Terrestrial and Aquatic Environments: Interim Summary," Los Alamos Scientific Laboratory report LA-8362 (September 1980).
4. J. H. Patterson, G. B. Nelson, G. M. Matlack, and G. R. Waterbury, "Interaction of  $^{238}\text{PuO}_2$  Heat Sources with Terrestrial and Aquatic Environments," in *Transuranium Nuclides in the Environment* (International Atomic Energy Agency, Vienna, 1976), pp. 63-78.
5. S. T. Kosiewicz, "Recommendations for Plutonium Colloid Size Determination," Los Alamos National Laboratory report LA-9987 (February 1984).
6. J. H. Patterson, G. B. Nelson, and G. M. Matlack, "The Dissolution of  $^{238}\text{Pu}$  in Environmental and Biological Systems," Los Alamos Scientific Laboratory report LA-5624 (July 1974).
7. G. M. Matlack, J. H. Patterson, G. B. Nelson, and G. R. Waterbury, "Dissolution Rates of  $^{238}\text{PuO}_2$  and  $^{239}\text{PuO}_2$  in 1 M Perchloric Acid," Los Alamos Scientific Laboratory report LA-6184 (March 1976).
8. J. H. Patterson, F. J. Steinkruger, G. M. Matlack, R. C. Heaton, K. P. Coffelt, and B. Herrera, "Plutonium Release from Pressed Plutonium Oxide Fuel Pellets in Aquatic Environments," Los Alamos National Laboratory report LA-9962-MS (December 1983).
9. F. W. Clinard and D. L. Rohr, "Spontaneous Fragmentation of an Alpha-Active Ceramic—A Mechanism for Dispersion of Solid Waste?" in *Scientific Basis for Nuclear Waste Management*, J. G. Moore, Ed. (Plenum Publishing Corporation, New York, 1981), Vol. 3, pp. 405-412.
10. R. L. Fleischer, "On the 'Dissolution' of Respirable  $\text{PuO}_2$  Particles," *Health Physics* **29**, 69-73 (1975).
11. R. L. Fleischer and O. G. Raabe, "Fragmentation of Respirable  $\text{PuO}_2$  Particles in Water by Alpha Decay—A Mode of 'Dissolution'," *Health Physics* **32**, 253-257 (1977).
12. R. L. Fleischer and O. G. Raabe, "On the Mechanism of 'Dissolution' in Liquids of  $\text{PuO}_2$  by Alpha Decay," *Health Physics* **35**, 545-548 (1978).
13. R. L. Fleischer and O. G. Raabe, "Recoiling Alpha-Emitting Nuclei. Mechanisms for Uranium-Series Disequilibrium," *Geochimica et Cosmochimica Acta* **42**, 973-978 (1978).
14. W. H. Adams, J. R. Buchholz, C. W. Christenson, G. L. Johnson, and E. B. Fowler, "Studies of Plutonium, Americium, and Uranium in Environmental Matrices," Los Alamos Scientific Laboratory report LA-5661 (January 1975).
15. E. A. Bondiotti and S. A. Reynolds, "Field and Laboratory Observations on Plutonium Oxidation States," in *Proceedings of an Actinide-Sediment Reactions Working Meeting at Seattle, Washington on February 10-11, 1976*, L. L. Ames, Ed., Battelle Pacific Northwest Laboratories report BNWL-2117 (1976), pp. 505-537.
16. E. A. Bondiotti and F. H. Sweeton, "Transuranic Speciation in the Environment," in *Transuranics in Natural Environments*, M. G. White and P. B. Dunaway, Eds. (Energy Research & Development Administration, Las Vegas, June 1977), NVO-178, pp. 449-476.

## APPENDIX: SUMMARY OF EXPERIMENTAL DATA

**TABLE A-I. Simulated Sea Water Composition<sup>a,b</sup>**

Ion	Concentration (ppm)	Ion	Concentration (ppm)
Cl	18 400	F	1.0
Na	10 220	MoO <sub>4</sub>	0.6
SO <sub>4</sub>	2 518	S <sub>2</sub> O <sub>3</sub>	0.3
Mg	1 238	Li	0.2
Ca	390	Rb	0.10
K	370	I	0.07
HCO <sub>3</sub>	142	EDTA	0.06
Br	60	Al	0.04
H <sub>3</sub> BO <sub>3</sub>	25	Zn	0.02
Sr	6	V	0.02
SiO <sub>3</sub>	3	Co	0.01
PO <sub>4</sub>	1.3	Fe	0.01
Mn	1.2	Cu	0.003

<sup>a</sup>Specific gravity 1.025 at 15°C.

<sup>b</sup>Data from Aquarium Systems, Inc., 8141 Tyler Blvd., Mentor, OH 44060.

**TABLE A-II. Source Characteristics**

Aquarium Source	Length <sup>a</sup> (mm)	Diameter <sup>a</sup> (mm)	Mass (g)	Area (mm <sup>2</sup> )	Fabrication		Isotopic Composition (wt%)						
					Date (mo/yr)	Fuel <sup>b</sup> Type	<sup>238</sup> Pu	<sup>239</sup> Pu	<sup>240</sup> Pu	<sup>241</sup> Pu	<sup>242</sup> Pu		
5	HPZ-111-1	19.77	20.29	63.216	1910	1/75	PPO	80 <sup>c</sup>	na	na	na	na	na
7	HPZ-3-3	4.27	13.65	6.155	477	8/72	PPO	80 <sup>c</sup>	na	na	na	na	na
9	HPZ-60-3	4.231	13.705	6.290	477	3/74	PPO	80 <sup>c</sup>	na	na	na	na	na
11	HPZ-60-2	4.246	13.703	6.287	477	3/74	PPO	80 <sup>c</sup>	na	na	na	na	na
12	HPZ-59-2	19.47	20.37	63.247	1900	3/74	PPO	80 <sup>c</sup>	na	na	na	na	na
13	HPZ-59-4	19.49	20.34	63.229	1900	3/74	PPO	80 <sup>c</sup>	na	na	na	na	na
21	ET-2-6	12.82 <sup>c</sup>	17.09 <sup>c</sup>	33.6	1350	3/81	GROG	83.22 <sup>d</sup>	14.14 <sup>d</sup>	2.04 <sup>d</sup>	0.44 <sup>d</sup>	0.15 <sup>d</sup>	
22	ET-1-5	12.82 <sup>c</sup>	17.09 <sup>c</sup>	33.6	1340	3/81	GROG	83.22 <sup>d</sup>	14.14 <sup>d</sup>	2.04 <sup>d</sup>	0.44 <sup>d</sup>	0.15 <sup>d</sup>	
23	ET-2-4	12.82 <sup>c</sup>	17.09 <sup>c</sup>	33.5	1350	3/81	GROG	83.22 <sup>d</sup>	14.14 <sup>d</sup>	2.04 <sup>d</sup>	0.44 <sup>d</sup>	0.15 <sup>d</sup>	
24	ET-2-2	12.82 <sup>c</sup>	17.09 <sup>c</sup>	33.6	1350	3/81	GROG	83.22 <sup>d</sup>	14.14 <sup>d</sup>	2.04 <sup>d</sup>	0.44 <sup>d</sup>	0.15 <sup>d</sup>	

<sup>a</sup>All sources were right, circular cylinders.

<sup>b</sup>PPO = pressed plutonium oxide; GROG = PPO using mixed particle sizes.

<sup>c</sup>Nominal values.

<sup>d</sup>On 6/18/80.

**TABLE A-III. Experiment Summary**

Aquarium Number	Water	Temperature (°C)	Source			Source In (mo/day/yr)	Source Out (mo/day/yr)	Elapsed Time (days)
			Number	Mass (g)	Area (mm <sup>2</sup> )			
5	Fresh <sup>a</sup>	12	HPZ-111-1	63.22	1910	01/20/75	03/25/75	2256
7	Sea <sup>b</sup>	10	HPZ-3-3	6.2	477	08/31/72	12/08/77	1925
9	Sea <sup>b</sup>	37	HPZ-60-3	6.29	477	03/28/74	01/25/77	1034
11	Fresh <sup>a</sup>	10	HPZ-60-2	6.29	477	03/28/74	03/17/81	2546
12	Sea <sup>b</sup>	37 <sup>c</sup>	HPZ-59-2	63.25	1900	10/25/74	12/08/77	1140
13	Sea <sup>b</sup>	10	HPZ-59-4	63.23	1900	10/25/74	03/31/81	2331
21	Sea <sup>b</sup>	35	ET-2-6	33.6	1350	03/27/81	10/26/83	943
22	Sea <sup>b</sup>	10	ET-1-5	33.6	1340	03/27/81	10/26/83	943
23	Fresh <sup>a</sup>	35	ET-2-4	33.5	1350	03/27/81	10/26/83	943
24	Fresh <sup>a</sup>	10	ET-2-2	33.6	1350	03/27/81	10/26/83	943

<sup>a</sup>Deionized water.

<sup>b</sup>Instant Ocean™ simulated sea water.

<sup>c</sup>29°C after 11/16/76 because of a broken heater.

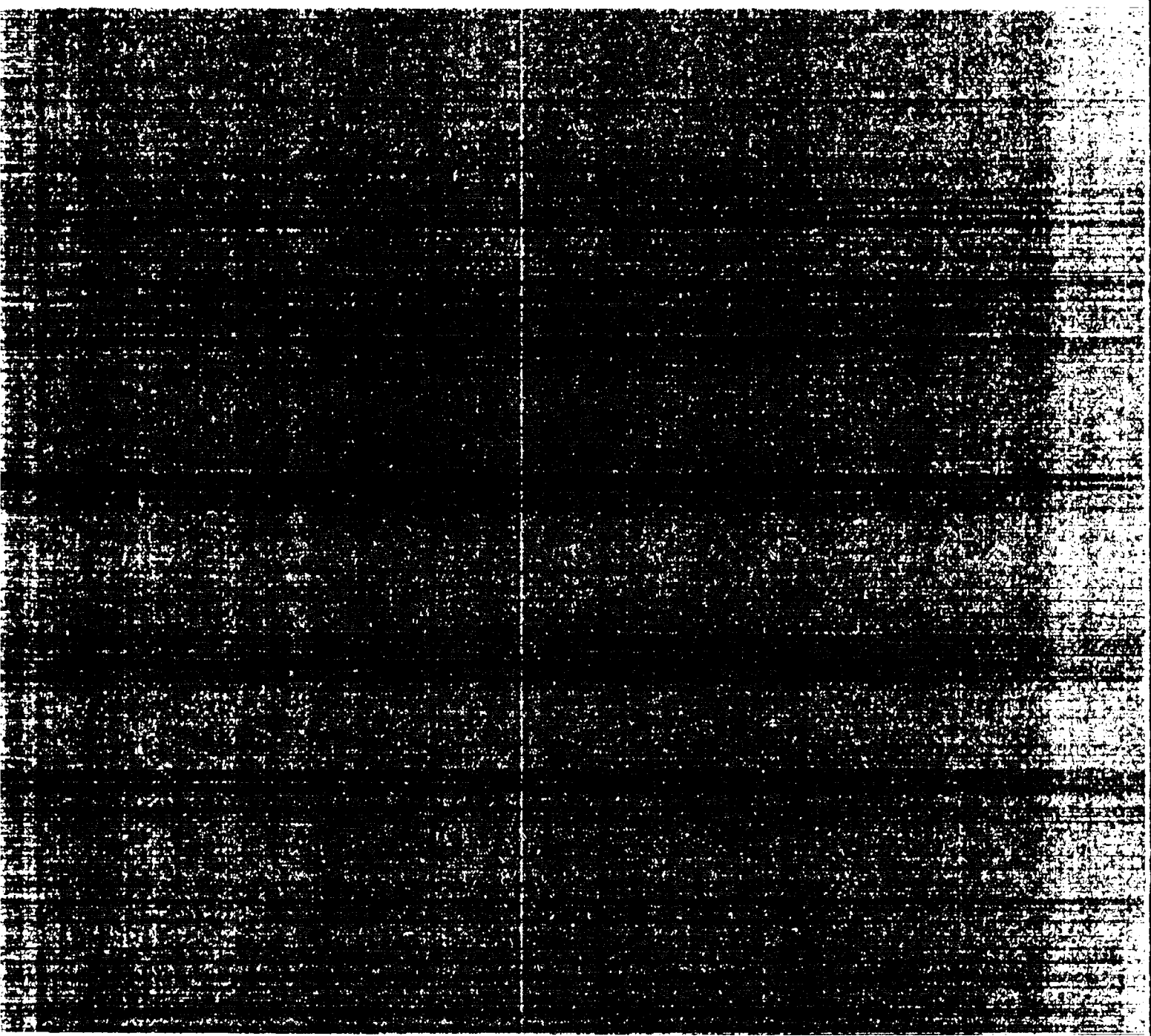
Printed in the United States of America  
Available from

National Technical Information Service  
US Department of Commerce  
526 Port Royal Road  
Springfield, VA 22161

Microfiche (A01)

Page Range	NTIS Price Code	Page Range	NTIS Price Code	Page Range	NTIS Price Code	Page Range	NTIS Price Code
001-025	A02	151-175	A08	301-335	A14	451-475	A20
026-050	A03	176-200	A09	326-350	A15	476-500	A21
051-075	A04	201-225	A10	351-375	A16	501-525	A22
076-100	A05	226-250	A11	376-400	A17	526-550	A23
101-125	A06	251-275	A12	401-425	A18	551-575	A24
126-150	A07	276-300	A13	426-450	A19	576-600	A25
						601-up	A26

\*Contact NTIS for a price quote.



Los Alamos