

DISCLAIMER

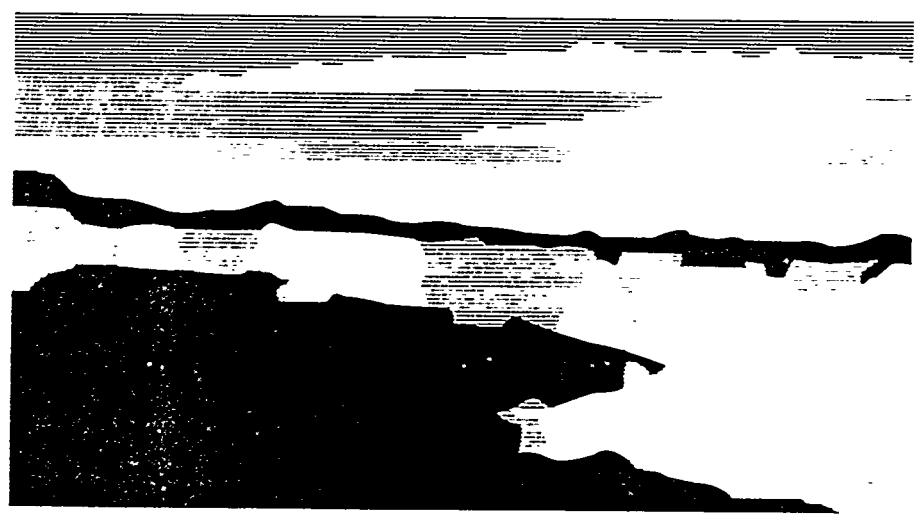
This report was prepared as an account of work sponsored by an agency of the United States Government. Neither the United States Government nor any agency thereof, nor any of their employees, makes any warranty, express or implied, or assumes any legal liability or responsibility for the accuracy, completeness, or usefulness of any information, apparatus, product, or process disclosed, or represents that its use would not infringe privately owned rights. Reference herein to any specific commercial product, process, or service by trade name, trademark, manufacturer, or otherwise does not necessarily constitute or imply its endorsement, recommendation, or favoring by the United States Government or any agency thereof. The views and opinions of authors expressed herein do not necessarily state or reflect those of the United States Government or any agency thereof.

Title: PLASMA PRODUCTION FROM SHOCK COMPRESSION OF CONDENSED MATTER

Author(s): Tai-Ho Tan
Stanley P. Marsh

Submitted to: APS Topical Meeting on Shock Compression of Condensed Matter

MASTER



Los Alamos
NATIONAL LABORATORY

Los Alamos National Laboratory, an affirmative action/equal opportunity employer, is operated by the University of California for the U.S. Department of Energy under contract W-7405-ENG-36. By acceptance of this article, the publisher recognizes that the U.S. Government retains a nonexclusive, royalty-free license to publish or reproduce the published form of this contribution, or to allow others to do so, for U.S. Government purposes. The Los Alamos National Laboratory requests that the publisher identify this article as work performed under the auspices of the U.S. Department of Energy.

DISCLAIMER

Portions of this document may be illegible in electronic image products. Images are produced from the best available original document.

PLASMA PRODUCTION FROM SHOCK COMPRESSION OF CONDENSED MATTER

Tai-Ho Tan and Stanley P. Marsh

DX-15, Los Alamos National Laboratory, Los Alamos, NM, 87545

The experimental investigation of HE-driven, phased, cylindrical, SS liner implosion has yielded many interesting results. Plasma and radiation are found to be copiously produced. Plasmas with velocity up to 17 cm/ μ s are observed. The temperature in the expansion surface reaches 8 - 10 eV and stays hot for tens of microseconds. The signatures of plasma interactions with the imploding wall and the glass port are clearly identified. Finally, a cluster of cooler but still self-luminous, high-density debris is observed to travel at 1.8 cm/ μ s. Additional experiments were carried out to study the plasma flow and reconvergence inside the liner cavity by inserting a diverting disk along the axis of implosion. Significant emission of vuv and soft x rays is detected. All the experiments are guided by the calculations using the MESA 2D hydrocode and the results agree with many of the predictions.

INTRODUCTION

The study of plasma and high-frequency radiation production from a purely hydrodynamic-driven shock compression of solids is difficult because the pressure needed to reach the ionized states requires very high impacting velocity that is not easily attainable. Furthermore, when plasma is produced it is often constrained by the configuration from being observed. From our investigation of HE-driven, phased, cylindrical liner implosion we are able to measure copious production of plasma and radiation. The study is motivated by the results of hydrocode calculations showing that when a hollow-core HE cylinder is initiated to drive a thin ss tubing, the convergence velocity can reach above 1 cm/ μ s, thus producing a 15-Mb pressure as the density is shock compressed to 19.5 g/cm³. The temperature from the heating rises rapidly above 8 eV and is followed by a combination of radiation and plasma emissions. The process continues for many microseconds as the phased implosion proceeds along the axis, and the evolving dynamics can be observed from the open end of the cylinder. The presence of structures in the expansion front and the maintenance of high temperature during the expansion are predicted, too. By inserting a small diameter disk along the phased implosion axis, simulation shows that the plasma flow can be perturbed and redirected to converge toward the axis. Cusps and hot spots are formed in

the plume with temperature in excess of 100 eV. These are intriguing predictions that if proven valid will provide us with a means to investigate a variety of topics in interesting dynamic regimes.

In these exploratory experiments, the HE initiation simultaneity and liner integrity are closely monitored to ensure that the implosion is symmetrical and free from evidence of material failure prompted by instabilities. Radiographs of implosions are compared with those from numerical simulations. Finally, multiple diagnostics that include an extensive array of time and spatially resolved instruments are employed to measure the history and profiles of plasma expansion and radiation temperature. Some of the results have been reported elsewhere.^{1,2} In this paper we include samples from code calculations and a discussion of the device and experimental setup, diagnostic instrumentation, data and code comparisons.

SAMPLE CALCULATIONS

The 2D MESA Eulerian hydrocode calculation is used to guide the design and execution of the experiments. A few examples from the implosion of a SS liner are provided here to facilitate the discussion. Similar calculations have been extended to other materials for comparison but will not be presented. The EOS input and zone size play a

critical role in the outcome of the simulations. These EOS values are often not totally derived from measurement, but rather from calculations based on a complicated set of physical models to cover the entire domain from solid to partially ionized gas. The end cap shown is incorporated to seal the cavity under vacuum during intense dynamic loading, a feature that makes it possible to transport plasma and soft x rays unimpeded.

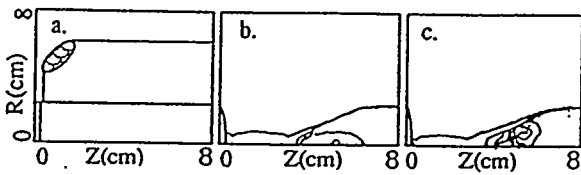


FIGURE 1. Samples of 2D hydrocode calculation.

Snapshots from two different calculations are presented in Fig. 1. Time starts at zero when the corner of the HE cylinder is initiated. Relative to firing unit discharge, an additional 15.2 μs burn time must be added. Figure 1a shows the device setup and the progression of the HE detonation wave at 2 μs after the corner initiation. The liner collapses on axis at 10.3 μs after reaching a velocity of 1 $\text{cm}/\mu\text{s}$. The maximum compressed density is calculated to be 19.5 g/cm^3 , while maximum pressure and temperature are 15 Mb and 8 eV. At this temperature the generated hot gas is partially ionized. The simulated event at 12.0 μs is shown in Fig. 1b, where the expanding plasma density envelope of $\sim 10^{-3} \text{g}/\text{cm}^3$ is moving at about 6 $\text{cm}/\mu\text{s}$. The fastest velocity for the very low-density component can exceed 14 $\text{cm}/\mu\text{s}$. Closer examination also reveals a wavy structure in the expansion front, suggesting the presence of instability. Because many details are clearly visible the dynamic profile at this time is usually chosen to compare with the radiograph. The hot gas continues to expand and manifest sign of instability at the expansion front. The temperature remains high, but may be a numerical artifact since the code does not account for heat loss. At later time, a high-density cluster of around 3 g/cm^3 liner debris begins to be formed and travels down the axis at about 1.8 $\text{cm}/\mu\text{s}$, which eventually impacts the glass port to generate a 25 eV temperature. Figure 1c shows the convergence of plasma flow in an arrangement where a 1.25 cm diam x 0.1-cm-thick SS disk is inserted at a distance of 5 cm. Cusps and hot spots are developed in the flow, and temperature at the convergence can reach as high as 100 eV.

EXPERIMENTS

Device Description and Typical Experimental Setup

The device description and arrangement of a typical experiment are illustrated in Fig. 2. The device, which consists of a simple, hollow core, PBX-9501 HE cylinder (13.5 cm o.d x 5.08 cm i.d. x 13.5 cm long), is corner initiated to implode a 5.08 cm o.d., 0.081-cm thick, seamless 304 SS tubing. The ring initiation is accomplished with a single detonator by means of a thin-wall conical structure fabricated from a C2 explosives. A 0.48-cm-thick SS sealing disk is welded to one end of the liner. The open end is glued to an expansion chamber to facilitate the fielding of diagnostics. The chamber is made either from plastic or aluminum and may be evacuated or backfilled to any level of pressure. To measure the plasma expansion and propagation of uv and higher frequency radiation the chamber is evacuated. A plastic chamber is employed when a vacuum above a few millitorrs is adequate and it enables cameras to view sideways through the chamber. A metal chamber is used when higher vacuum is needed. The insert at the lower left corner shows the arrangement where a SS disk is placed along the axis to divert the plasma flow. In this configuration the HE cylinder is shortened to 6.25 cm in length.

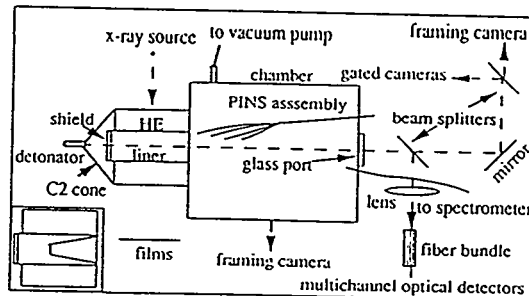


FIGURE 2. Schematic of device and experimental setup.

Itemized Diagnostics and Functions

An extensive array of diagnostic instrumentation is fielded in each shot, and is designed to assess the performance and to reveal temporal and spatial information that can be correlated with the simulations. Some are not shown and other are not

fielded in every shot. Often, 8 electrical pins are placed in a collar around the HE to measure the initiation simultaneity. A radiograph is taken to assess the implosion symmetry and overall dynamic behavior. A time and spectrally resolved multichannel optical fiber detector system is employed to record light emission history inside the imploding cavity. These detectors with their color or neutral density filters are calibrated and arranged to cover four orders of magnitude in intensity. Sharing the view along the axis with the aid of a beam splitter are several time-resolved cameras. A gated 1024-channel spectrometer is fielded via an optical fiber to grab an interval of light emission for absolute spectrum determination, and it provides an in-situ calibration for the fiber detectors. An IMACON framing camera viewing sideways through the plastic chamber is included to record the expansion of plasma and liner debris. Optical pins were introduced once to measure the plasma expansion velocity, but tend to be intrusive to the experiment. Photoelectric diodes (XRD) are employed to measure the uv, vuv and soft x-ray emissions.

Results and Comparisons with Code Predictions

In all the experiments the electrical pin data have consistently shown that the initiation around the corner of the HE cylinder is simultaneous to within 25.5 ns and starts at 15.2 μs after the firing discharge. All the experimental times are measured from the discharge signal. A radiograph is shown in Fig. 3. Aside from showing implosion symmetry, it also reveals a wealth of dynamic information after the initial axial collapse, which includes the size and shape of the imploding liner over its entire length, signatures of higher density plasma and jet emissions, shock reflection into the expanding HE gas, and behavior of the sealing cap. The profile from the calculation overlaps remarkably well with the observed features. Similar results are obtained from exposures where a disk is inserted, and shows that the disk remains in place before collision with the imploding liner.

Measurement of light emission from the evacuated cavity provides the history of the entire dynamic process for more than 20 μs . Signal of a typical fiber optic channel is shown in Fig. 4. The start at 25.5 μs corresponds exactly to the calculated time of collapse. It rises steeply to reach a peak in

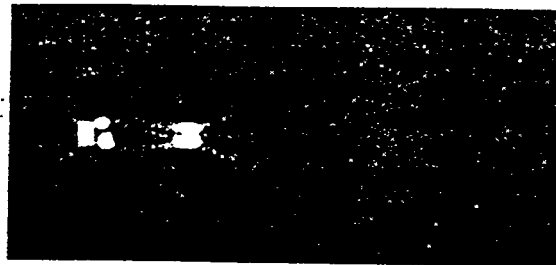


FIGURE 3. An x-ray radiograph taken at 27 μs .

about 1 μs and may be explained by plasma expansion into the imploding wall. The temperature from 26.25 to 27.25 μs is estimated to be 8 eV from intensity calibration, which is consistent with the fit to a blackbody-like spectrum from the spectrometer and in agreement with the prediction. Continuous intensity increase before the second peak may be attributed to emissions from the expanding plasma surface, hot spots generated by instability and continuous implosion. The calculation does predict maximum temperature to remain between 8-10 eV during the expansion. The location of the second peak at 32 μs coincides with the calculated arrival of higher density plasma at the glass port. The third peak at 36.6 μs correlates well with the predicted final impact by the massive cluster. This is supported by the observations from the side viewing IMACON and the axially imaging rotating mirror camera. The absence of light earlier than 25.51 μs suggests that the vacuum has no leak.

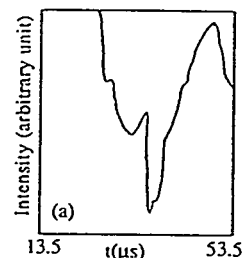


FIGURE 4. Light emission history during implosion.

The IMACON images from the side through the plastic chamber wall were recorded at 0.5 μs intervals. Using a 1-ND filter, the early unsaturated records reveal the impact at the window by the transparent plasma. The fastest plasma velocity is thus estimated to be between 12-17 cm/ μs , consistent with the calculation and supported by the optical pin measurements. Those images taken with

2-ND filters clearly show the self-luminous debris entering the plastic chamber at $29.5 \mu\text{s}$, advancing at a speed of about $1.9 \text{ cm}/\mu\text{s}$, and producing the third peak in Fig. 4, all tending to confirm the predictions.

The usefulness of ultrafast framing photography of the imploding liner cavity is compromised by its inability to accommodate the rapid variation in the object location and light emission intensity. In one setting the IMACON images were saturated because of insufficient attenuation. In another setting, a rotating mirror camera focusing on the expansion chamber yielded no information on the collapsing cavity. However, the images of a cloud-like expansion over several microseconds corresponds closely to the debris observed in the IMACON. The punch-through at the port is clearly visible. Finally, a well focused snapshot taken along the axis by a fast-gated electronic camera at $1.1 \mu\text{s}$ after the liner collapsed is shown in Fig. 5. The appearance of structures in the plasma expansion implies nonuniform density and/or temperature distribution, strongly indicating the presence of turbulence and hot spots, as suggested by the simulation. Further study of this structure may shed light toward understanding the nature of plasma behaviors in a phased implosion process.



FIGURE 5. Axial view of expanding plasma.

In the two experiments where a disk is inserted to divert the plasma flow, a large amount of soft x rays is detected. The unfiltered channels with a threshold of 16 eV are near saturation. However, the signal from the high-energy, carbon filtered channel is small, and the ratio suggests that the integrated temperature measured over the entire plasma plume is only about 10 eV . This is to be expected if the very high temperature hot spots represent only a very small fraction of the total area of emission. Three gated cameras triggered at different times

yielded information on plasma before, during, and after flow around the disk. Interesting structures are seen in the expansion, but all the photographs were taken before the plasma plume reconverged on axis.

CONCLUSIONS

We have demonstrated that a very thin SS cylindrical liner can be driven by HE to implode symmetrically and intact to very high velocity, with a substantial plasma and radiation yield. We are pleasantly surprised to find that the data are in reasonable agreement with many of the predictions from the numerical simulation. It appears that we may have found a powerful tool to study interesting ultra-high pressure and temperature phenomena in the regimes that are normally investigated only with electromagnetically driven, pulsed power devices.

ACKNOWLEDGEMENTS

We are indebted to C. Findley, N. Gray, H. Oona, G. Idzorek, P. Rodriguez, S. Sterbenz, and L. Veaser for their contributions.

Research supported by DOE.

REFERENCES

1. T. H. Tan and S. P. Marsh, Proceedings of the 4th International Symposium on High Pressure Dynamics, Tours, France, 1995, p. 373.
2. T. H. Tan and S. P. Marsh, Proceedings of the International Symposium on Shock Waves, Pasadena, California, USA, 1995, in print.