

Copy 25 of 30

Series A

VERIFIED UNCLASSIFIED

~~NDA 6/18/79~~

LA 1398

LOS ALAMOS NATIONAL LABORATORY



3 9338 00371 9837

UNCLAS

~~RESTRICTED INFORMATION~~

~~REPRODUCTION SHEET FOR A CLASSIFIED DOCUMENT~~

TRANSMITTAL OF THIS DOCUMENT MUST BE COVERED BY A SIGNED RECEIPT. IT MUST NOT BE LEFT UNATTENDED OR WHERE AN UNAUTHORIZED PERSON MAY HAVE ACCESS TO IT. WHEN NOT IN USE, IT MUST BE STORED IN A LOCKED FILE OR SAFE. WHILE THIS DOCUMENT IS IN YOUR POSSESSION AND UNTIL YOU HAVE OBTAINED A SIGNED RECEIPT UPON ITS TRANSFER TO AN AUTHORIZED INDIVIDUAL, IT IS YOUR RESPONSIBILITY TO KEEP IT AND ITS CONTENTS FROM ANY UNAUTHORIZED PERSON.



~~RESTRICTED DATA~~

THIS DOCUMENT CONTAINS RESTRICTED DATA AS DEFINED IN THE ATOMIC ENERGY ACT OF 1946. ITS TRANSMITTAL OR THE DISCLOSURE OF ITS CONTENTS IN ANY MANNER TO AN UNAUTHORIZED PERSON IS PROHIBITED.

LOS ALAMOS NATL. LAB. LIBS.
3 9338 00371 9837

UNCLASSIFIED

~~RESTRICTED INFORMATION~~

UNCLASSIFIED

UNCLASSIFIED

UNCLASSIFIED

LOS ALAMOS SCIENTIFIC LABORATORY
of the
UNIVERSITY OF CALIFORNIA

*NDA Verified
6/18/79*

Report written:
April 18, 1952

LA-1398

This document consists of 8 pages
 of 30 copies, Series A

PUBLICLY RELEASABLE
LANL Classification Group

J. Brown 11/19/79

YIELD OF THE HIROSHIMA BOMB

Classification changed to UNCLASSIFIED
by authority of the U. S. Atomic Energy Commission,

Per *Jack H. P. [unclear] 3-25-65*

Work done by:

F. Reines
T. J. White

By REPORT LIBRARY *W. T. [unclear] 3-4-65*

Report written by:

F. Reines

WEAPON DATA
Codes for [unclear]

UNCLASSIFIED

UNCLASSIFIED

UNCLASSIFIED

~~SECRET~~
03170

UNCLASSIFIED

MAY 2 1952

~~SECRET~~

Washington Document Room
J R. Oppenheimer
Los Alamos Report Library

1 - 7
8
9 - 30

~~SECRET~~
UNCLASSIFIED

UNCLASSIFIED

UNCLASSIFIED

UNCLASSIFIED

By comparing condenser gauge records obtained at Hiroshima and Nagasaki, it is possible to estimate the yield of the Hiroshima gun. The result is that Hiroshima was $18-1/2 \pm 5$ kT based on an assumption of 23 ± 2 kT for Nagasaki.

The basis for the assumed yield for Nagasaki is as follows. The Bikini Able and Trinity models were the same. Ball of fire ratios give 23.8 kT for Trinity if the radio-chemical yield for Bikini Able, 22 kT, is taken as the reference figure (Sandstone Scientific Directors Report, Vol. 9). It is to be noticed that yield ratios from fireball measurements are considered much more reliable than the radio-chemical techniques as employed at Trinity. Hence, it seems reasonable to assume the Nagasaki yield to be 23 ± 2 kT.

The analysis presented here is based on the one usable record obtained from each of the Japanese drops. The comparison is made using the rather accurately known ($\pm 3\%$) durations of the positive phases rather than the poorly known peak overpressures. The essential feature of the analysis is the near duplication of height of gauge, distance to gauge, and height of burst for the two drops. Because of this circumstance, such poorly known theoretical factors as altitude effects should have little bearing on a comparison between these two cases.

The usual scaling law, in the absence of atmospheric effects, would require

$$\frac{\tau}{W^{1/3}} = f\left(\frac{R}{W^{1/3}}\right), \quad (1)$$

UNCLASSIFIED

UNCLASSIFIED

UNCLASSIFIED

UNCLASSIFIED

where W is the yield of the bomb in kT , τ is the duration of the positive phase, and R is the distance at which τ is measured. We require for our present purposes an approximation of f over a reasonably small range of the variable $\frac{R}{W^{1/3}}$.

The rate of change of the duration of the positive phase with respect to R is

$$\frac{d\tau}{dR} = \frac{1}{C} - \frac{1}{V}, \quad (2)$$

where C is sound velocity and V the shock front velocity at R . For a given bomb we may then write

$$d\left(\frac{\tau}{W^{1/3}}\right) = \left(\frac{1}{C} - \frac{1}{V}\right) d\left(\frac{R}{W^{1/3}}\right). \quad (3)$$

The shock conditions give

$$\frac{C}{V} = \left(\frac{\gamma+1}{2\gamma} \frac{p}{p_0} + 1\right)^{-1/2},$$

or approximately,

$$\frac{1}{V} = \frac{1}{C} \left(1 - \frac{\gamma+1}{4\gamma} \frac{p}{p_0}\right), \quad (4)$$

where p is the excess pressure over p_0 , the unshocked air pressure, and $\gamma = 1.4$.

At this large distance from the bomb a reasonable assumption for p is

$$p = K \left(\frac{R}{W^{1/3}}\right)^{-1}, \quad (5)$$

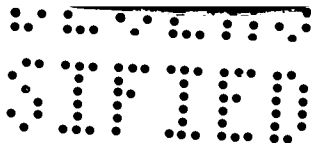
where K is a constant over the range of $\frac{R}{W^{1/3}}$ considered.

Combining (3), (4) and (5),

$$d\left(\frac{\tau}{W^{1/3}}\right) = \frac{(\gamma+1)K}{4\gamma C p_0} \frac{d\left(\frac{R}{W^{1/3}}\right)}{\left(\frac{R}{W^{1/3}}\right)^2} \quad (6)$$

UNCLASSIFIED

UNCLASSIFIED



where p_0 , C may be taken as constant over the range of integration.

Then

$$\frac{\tau}{W^{1/3}} - \frac{\tau_0}{W_0^{1/3}} = \frac{(\gamma + 1)K}{4\gamma C p_0} \log \left(\frac{\frac{R}{W^{1/3}}}{\frac{R_0}{W_0^{1/3}}} \right), \quad (7)$$

the constant of integration being split into two parts and so chosen that the function fits the following data for Nagasaki:

$$C = 1000 \text{ ft/sec}$$

$$p_0 = 4.39 \text{ psi}$$

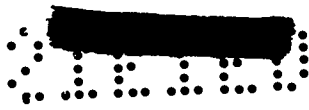
$$p = 0.15 (\pm 30\%)$$

$$R_0 = 36,000 \text{ ft} (\pm 5\%)$$

$$W_0 = 23 \text{ kT} (\pm 10\%)$$

$$\tau_0 = 1.25 \text{ sec} (\pm 3\%).$$

These figures and those used below for τ and R for Hiroshima are taken from LAMS-428. Variations in C and p_0 are insignificant. Since the Hiroshima gauge gave a peak overpressure of 0.089, it is assumed that p lies between 0.1 and 0.2 psi. The $\pm 3\%$ taken for τ_0 (and τ) is based on an estimate of error caused by a drop of one minute at 15 ft/sec of a gauge with a time constant of 30 sec. The fact that the pressure-time curve went off scale at Nagasaki should not make less certain the duration of the positive phase since the break in the pressure-time record was sharp and when the record came back on scale it was smooth.



SECRET

Agnew states the figure $\pm 2\%$ given in LA-1023 for R_0 (and R) is in error and is disregarded here. In the method outlined in LAMS-377 for the computation of R_0 and R, the RMS of the errors involved is 5%.

The constant K in (5) is taken as the value which fits the Nagasaki data. Substituting $\tau = 1.25$ sec at 40,000 ft for Hiroshima in (7) yields $\frac{W}{W_0} = 0.805$, and, therefore, for 23 kT at Nagasaki, we obtain a yield of 18-1/2 kT for Hiroshima.

Letting ΔW be percentage change, we find from (7) that

$$\Delta W = \left[\frac{K_1}{3} - \frac{\tau}{3W^{1/3}} \right]^{-1} \left\{ \left[\frac{K_1}{3} - \frac{\tau}{3W^{1/3}} \right] \Delta W_0 - \frac{\tau}{W^{1/3}} \Delta \tau + \frac{\tau_0}{W_0^{1/3}} \Delta \tau_0 + K_1 \Delta R + \left[\frac{\tau}{W^{1/3}} - \frac{\tau_0}{W_0^{1/3}} - K_1 \right] \Delta R_0 + \left[\frac{\tau}{W^{1/3}} - \frac{\tau_0}{W_0^{1/3}} \right] \Delta P \right\}$$

where $K_1 = \frac{(\gamma+1)p}{4\gamma C p_0} \frac{R_0}{W_0^{1/3}}$

Therefore,

$$\text{RMS } \Delta W = 10.45 \left\{ 9.15 \times 10^{-3} (\Delta W_0)^2 + 0.223 (\Delta \tau)^2 + 0.193 (\Delta \tau_0)^2 + 0.0344 (\Delta R)^2 + 0.0233 (\Delta R_0)^2 + 1.08 \times 10^{-3} (\Delta P)^2 \right\}^{1/2}$$

-6-

~~SECRET~~

SECRET

SECRET

THIS DOCUMENT CONTAINS UNCLASSIFIED INFORMATION

UNCLASSIFIED

With the percentage changes allowed above,

$$\text{RMS} \cdot \Delta W = 28\%$$

and finally for Hiroshima $W = 18-1/2 \pm 5$ kT.

It is interesting that a calculation of yields for Hiroshima and Nagasaki, based on the observed durations of the positive phases, and reported by Wieboldt in LAMS-428, also yields the ratio

$$\frac{W}{W_0} = \frac{18}{23}$$

The absolute values given by Wieboldt are significantly higher than those given here, but since he attempts to give a yield using only theory starting with the calculation of the explosion and following the blast through an inhomogeneous atmosphere to the gauge, the ratio is expected to be more reliable.

Obviously it is desirable to fix the Hiroshima yield more closely. None the less, the number obtained here has the virtue of being based on a measurement which is not subject to the vagaries of blast damage as was Penney's estimate. A city is not the ideal blast gauge.

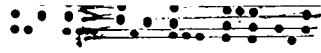
It is to be compared with the calculation of the Hiroshima yield of 15 ± 5 kT (T. Taylor, private communication). Further, for use in the correlation of damage with yield, it is seen that insofar as the peak overpressure is the damage criterion, the uncertainty in blast damage radius is given by

$$\frac{\Delta R}{R} = \frac{\Delta W^{1/3}}{W^{1/3}} = \frac{1}{3} \frac{\Delta W}{W} = \pm \frac{1}{3} \frac{5}{18} \approx 0.1,$$

a figure compatible with the accuracy to which it is possible to assess blast damage.

UNCLASSIFIED

UNCLASSIFIED



01100

The present estimate could be improved by a more accurate determination of a reference point than that provided by Nagasaki. This improvement would, of course, be limited by the errors in the Hiroshima data and so the error ± 5 kT could not be reduced by more than $\sim \frac{1}{\sqrt{2}}$ and would still be at least ± 3.5 kT.

01100

01100

UNCLASSIFIED

08144
031713

REPORT LIBRARY

REF ID: 21A

DATE: 5/2/52

RECEIPT

031713
08144