

CIC-14 REPORT COLLECTION

LA-9720-MS

REPRODUCTION  
COPY

Los Alamos National Laboratory is operated by the University of California for the United States Department of Energy under contract W-7405-ENG-38.

*(n, n') Be Cross Sections  
Probability in a Plasma*

LOS ALAMOS NATIONAL LABORATORY



3 9338 00308 8878

L

Alamos

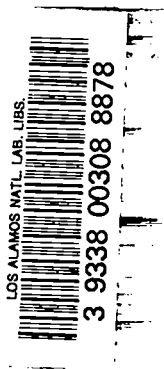
Los Alamos National Laboratory  
Los Alamos, New Mexico 87545

**DISCLAIMER**

This report was prepared as an account of work sponsored by an agency of the United States Government. Neither the United States Government nor any agency thereof, nor any of their employees, makes any warranty, express or implied, or assumes any legal liability or responsibility for the accuracy, completeness, or usefulness of any information, apparatus, product, or process disclosed, or represents that its use would not infringe privately owned rights. Reference herein to any specific commercial product, process, or service by trade name, trademark, manufacturer, or otherwise, does not necessarily constitute or imply its endorsement, recommendation, or favoring by the United States Government or any agency thereof. The views and opinions of authors expressed herein do not necessarily state or reflect those of the United States Government or any agency thereof.

# ${}^6\text{Li}(t,n)2\alpha$ and ${}^6\text{Li}(t,n){}^8\text{Be}$ Cross Sections and Relative Reaction Probability in a Plasma

Joseph J. Devaney



## CONTENTS

	PAGE
ABSTRACT .....	1
I. INTRODUCTION .....	1
II. CROSS-SECTION SEARCH .....	2
III. LOW ENERGY ${}^6\text{Li}(t,n)2\alpha$ CROSS SECTIONS .....	3
IV. PROBABILITY OF AN MeV (t,n) REACTION IN A HOT LITHIUM PLASMA .....	4
REFERENCES .....	8

**${}^6\text{Li}(t,n)2\alpha$  AND  ${}^6\text{Li}(t,n){}^8\text{Be}$  CROSS SECTIONS  
AND RELATIVE REACTION PROBABILITY IN A PLASMA**

by

Joseph J. Devaney

**ABSTRACT**

Because of the high exothermic energy of  ${}^6\text{Li}(t,n)$  and consequent high neutron energy therefrom, there is interest in this reaction in thermonuclear processes. We review the cross-section literature readily available. We calculate the comparative  ${}^6\text{Li}(n,t)$  reaction probability versus the slowing-down-without-reaction probability for pure lithium for various lithium densities and temperatures, and for tritium energies up to 2.5 MeV.

---

**I. INTRODUCTION**

There is interest in the  ${}^6\text{Li}(t,n)$  reaction in thermonuclear studies because of the high exothermic energy:  $Q = 16.02$  MeV to  ${}^8\text{Be}$  and  $Q = 16.12$  MeV to  $2\alpha$ ; and because the resulting neutron is produced at high energies, which allows, then, energetic triton production through the exothermic reaction  ${}^6\text{Li}(n,t){}^4\text{He}$ ,  $Q = 4.78$  MeV. The question is, can this process repeat in a sustaining way?\* The answer appears, at this time, to be no (except thermally at extremely high temperatures).

Although the discrepancies in the MeV  $(t,n)$  cross section range to as high as a factor of 10, the cross sections are all much too low (by factors of about 100 to over 10 000) to compete with electronic slowing down of an energetic triton in lithium. Hadronic slowing down will further decrease the nuclear reaction probability with lithium, as will, of course, the presence of other

---

\*Suggested by Steve Howe, information supplied by Dale Henderson, Los Alamos, X-Division, June 7, 1982.

elements in combination with lithium. For lower energy, i.e., thermal tritons, one is faced with a rather large effective threshold energy in the 100-keV range, i.e.,  $\sigma^{6\text{Li}}(n,t)$  is about 12 mb at 150-keV triton energy.<sup>1</sup>

Nevertheless, the potential of the process



is so great that I herewith document my findings for the edification, criticism, and correction of (and by) others.

## II. CROSS-SECTION SEARCH

In pursuit of the  ${}^6\text{Li}(t,n)2\alpha$ ,  ${}^6\text{Li}(t,n){}^8\text{Be}$  cross sections, I have checked: the Nuclear Data Sheets<sup>2</sup> Reaction Lists for 1981 to 1975, inclusive; Fay Ajzenberg-Selove's A = 9 compilation;<sup>3</sup> R. J. Howerton's  $\overline{\sigma v}$ 's;<sup>4</sup> J. Rand McNally, Jr., Fusion Reactivity Graphs and Tables;<sup>5</sup> Jarmie and Seagrave, Charged Particle Cross-Section compilation;<sup>6</sup> and Gerry Hale's Data for Fusion Reactions.\* Further, I consulted with McNally, Selove, Howerton, Jarmie, Hale, and with Norman Holden of Brookhaven National Laboratory. Four sources of MeV cross sections were, thereby, obtained.<sup>1,7-9</sup> A fifth source<sup>10</sup> was not used. The  ${}^6\text{Li}(t,2n){}^7\text{Be}$  reaction was ignored because its effective threshold is about 4.5 MeV.<sup>11</sup> Only Ref. 1 (Val'mer et al.) gives angular distributions and total reaction cross sections. Accordingly, its angular distributions were used for all. In addition, Jarmie and Diven<sup>8</sup> give only thick target yields at 0°. We unscramble the thick target yields as follows: the probability, p, that a given triton of energy,  $E_0$ , will react during its slowing down in a thick target of lithium is given by

$$p = \int_{E_0}^0 \left[ \frac{n_{\text{Li}} \sigma_{tn}(E)}{(dE/dx)} \right] dE \quad .$$

(2)

\*Information supplied by G. M. Hale, Los Alamos Group T-2, March 1981.

We use this equation in the approximate form:

$$\sigma_{tn}(E) \approx \frac{\Delta p \cdot (dE/dx)}{\Delta E \cdot n_{Li}} \quad (3)$$

$\Delta p/\Delta E$  is obtained from the thick target yields of Jarmie and Diven (Ref. 8);  $n_{Li}$  for cold solid lithium is  $4.598 \times 10^{22}$  atoms/cc (Ref. 12); and  $dE/dx$  is obtained from Andersen and Ziegler (Ref. 12). Then, as noted above, we use the angular distributions of Val'mer et al.<sup>1</sup> to get a total reaction cross section. The results are given in Table I.

**TABLE I**  
**<sup>6</sup>Li(t,n) CROSS SECTIONS**  
(millibarns)

$E_t$ (MeV)	$\sigma_{tn}$ (mb)			
	Jarmie, Diven <sup>a</sup> (1963)	Val'mer et al. (1961)	Crews <sup>b</sup> (1952)	Serov, Guzhovskii <sup>c</sup> (1962)
0.9	48.6	89.8	7.9	56.8
1.5	44.8	155.9	22.6	77.0
2.1	65.6	324.5	28.2	
2.5	67.2			

<sup>a</sup>Based on thick target, 0° yields (Ref. 8).

<sup>b</sup>Estimated from 90° cross sections for <sup>6</sup>Li(t,α)<sup>5</sup>He (Ref. 9).

<sup>c</sup>From 0° cross sections.

Note: a, b, and c all use Val'mer et al.<sup>1</sup> angular distributions.

### III. LOW ENERGY <sup>6</sup>Li(t,n)2α CROSS SECTIONS

Because the (t,n) mirror reaction <sup>6</sup>Li(<sup>3</sup>He,p)2α cross section is apparently known at low energies,<sup>5</sup> it is possible to use part of the Dodder-Hale R-matrix theory\* to generate the <sup>6</sup>Li(t,n)2α cross section at low energies. Estimates of time required run to a few weeks.

\*Information supplied by G. M. Hale, Los Alamos Group T-2, June 1982.

#### IV. PROBABILITY OF AN MeV (t,n) REACTION IN A HOT LITHIUM PLASMA

When a charged particle enters matter, two broad classes of interaction compete for the fate of the particle: (1) slow down of the particle and (2) nuclear reactions. [In our energy regime, atomic and molecular interactions are part of (1).]

For MeV tritons into lithium, the former wins hands down, even at very hot temperatures. We will substantiate this conclusion by comparing the nuclear reaction probability (essentially  $\sigma_{nt}$ ) with only part of the stopping power, the electronic slowing down. There is also hadronic and hadronic-electronic interference stopping.<sup>13</sup> Moreover, we need only include the slowing down in the lithium itself. Lithium, in a compound or mixture, will give a yet greater advantage to the slowing down versus nuclear reaction of the triton. We use the theory of Longmire<sup>14</sup> to calculate the electronic stopping power for the triton by the electrons of  ${}^6\text{Li}$ :

$$\frac{dE}{dx} \approx -n_2 \frac{4\sqrt{\pi} Z_1^2 Z_2^2 e^4}{\sqrt{EkT}} \cdot \ln\left(\frac{2}{\theta_m}\right) \cdot \sqrt{\frac{m_2}{m_1}} \cdot \left[\frac{E}{(3/2)kT} - 1\right] \quad (4)$$

and by the nuclei  ${}^6\text{Li}$ :

$$\frac{dE}{dx} \approx n_2 \frac{2\pi Z_1^2 Z_2^2 e^4}{E} \cdot \ln\left(\frac{2}{\theta_m}\right) \cdot \frac{m_1}{m_2} \quad (5)$$

Here 2, the target, refers to  ${}^6\text{Li}$ , namely to electrons in Eq. (4) and to the  ${}^6\text{Li}$  nucleus in Eq. (5), and 1 refers to the projectile, the triton. Therefore, n is either the electron or the  ${}^6\text{Li}$  density. Z refers to the charge number ( $Z_1 = 1$ ,  $Z_2 = 1$  or 3). E is the projectile (triton) energy, x is the triton path length, e is the electron charge, kT is the temperature in energy units, and m is mass.  $\theta_m$  is the minimum scattering angle, which we give below.



If the test quantity  $q$

$$q \equiv \frac{2Z_1 Z_2 e^2}{\hbar v} , \quad (6)$$

where  $\hbar$  is Planck's constant divided by  $2\pi$ , and  $v$  is the relative velocity of particle 1 to 2, satisfies:

$$q \geq 1 ; \quad (7)$$

then the scattering is classical and<sup>14</sup>

$$\theta_m = \frac{2Z_1 Z_2 e^2}{\lambda_D \mu v^2} \quad (\text{classical}) . \quad (8)$$

However, if

$$q < 1 , \quad (9)$$

then the minimum scattering angle is given by the uncertainty,<sup>14</sup>

$$\theta_m = \frac{\hbar}{\mu v \lambda_D} \quad (\text{quantum}) , \quad (10)$$

where  $\lambda_D$  is the Debye length of the plasma:

$$\lambda_D = \sqrt{\frac{kT}{4\pi n_e e^2}} , \quad (11)$$

where  $n_e$  is the electron density and  $\mu$  is the reduced mass  $\mu \equiv m_1 m_2 / (m_1 + m_2)$ . We find that for electrons,  $q < 1$ ; so we use the quantum result Eq. (11) into Eq. (10) into Eq. (4). For the nucleus  ${}^6\text{Li}$ , we find  $q \geq 1$ ; so we use the

classical result Eq. (11) into Eq. (8) into Eq. (5). The sum of Eqs. (4) and (5) gives us the total electronic stopping power.

$$\left(\frac{dE}{dx}\right)_{\text{electronic}} = \left(\frac{dE}{dx}\right)_{\text{electrons}} + \left(\frac{dE}{dx}\right)_{\text{nuclei}} \quad (12)$$

We calculate the stopping power for the  ${}^6\text{Li}$  densities of 74.92 g/cc (corresponds to 100 g/cc of  $\text{D}^6\text{Li}$ ) and 0.62 g/cc (corresponds to the standard temperature and pressure density of lithium-6 in  $\text{D}^6\text{Li}$ ).

Referring to Eq. (2) or (3), we see that if the quantity  $(1/n_{\text{Li}})(dE/dx)$  is large compared to the quantity  $\sigma_{\text{tn}} \Delta E$ , then the probability  $\Delta p$  of the (t,n) reaction in that energy interval,  $\Delta E$ , is low. Accordingly, so that the reader may judge for himself, these quantities are given in Table II for two densities, four energies, and five temperatures. The second-order effect of temperature on  $\sigma_{\text{tn}}$  is ignored in Table II.

It can be seen from Table II that in every case, even at 20 keV, the ratio  $n_{\text{Li}} \sigma_{\text{tn}} \Delta E / (dE/dx)$  is less than 0.004 (and is as low as 0.00008) so that the probability of an  ${}^6\text{Li}(n,t)$  reaction given by Eq. (2) is less than 1% at 20 keV and much less than 1% at lower temperatures, even just including electronic slowing down of lithium alone. Therefore, we conclude that, except in an extremely high temperature thermonuclear reaction, say for temperatures,  $T \sim 150$  keV roughly, the process of Eq. (1) cannot be sustained because the overwhelming probable fate of the energetic triton from  ${}^6\text{Li}(n,t){}^4\text{He}$  is to be slowed down to thermal energies without nuclear reaction.

TABLE II

Comparison of  $\sigma_{tn} \Delta E_{\text{triton}}$  Versus  $n_{\text{Li}}^{-1} (dE_{\text{triton}}/dx)$  electronic total in Pure  ${}^6\text{Li}$   
 (in  $\text{MeV}^2 - \text{cm}$ ) ( $\sigma_{tn}$  are the Jarmie and Diven derived values in Table I)

$\rho_{6\text{-Li}} = 74.92\text{g/cc}$

$E_t = 0.9 \text{ MeV}, \Delta E_t = 0.9 \text{ MeV}, \sigma_{tn} \Delta E_t = 4.4(-26)\text{MeV} - \text{cm}^2$

T(keV)	1	2	5	10	20
$n^{-1}(dE_t/dx)(\text{MeV} - \text{cm}^2)$	1.24(-22)	5.8(-23)	2.3(-23)	1.36(-23)	9.8(-24)

$E_t = 1.5 \text{ MeV}, \Delta E_t = 0.6 \text{ MeV}, \sigma_{tn} \Delta E_t = 2.7(-26)\text{MeV} - \text{cm}^2$

T(keV)	1	2	5	10	20
$n^{-1}(dE_t/dx)(\text{MeV} - \text{cm}^2)$	1.56(-22)	6.7(-22)	2.5(-23)	1.29(-23)	7.9(-24)

$E_t = 2.1 \text{ MeV}, \Delta E_t = 0.6 \text{ MeV}, \sigma_{tn} \Delta E_t = 3.9(-26)\text{MeV} - \text{cm}^2$

T(keV)	1	2	5	10	20
$n^{-1}(dE_t/dx)(\text{MeV} - \text{cm}^2)$	1.83(-22)	8.2(-23)	2.8(-23)	1.33(-23)	7.4(-24)

$E_t = 2.5 \text{ MeV}, \Delta E_t = 0.4 \text{ MeV}, \sigma_{tn} \Delta E_t = 2.7(-26)\text{MeV} - \text{cm}^2$

T(keV)	1	2	5	10	20
$n^{-1}(dE_t/dx)(\text{MeV} - \text{cm}^2)$	1.99(-22)	8.8(-23)	3.0(-23)	1.38(-23)	7.2(-24)

$\rho_{6\text{-Li}} = 0.62\text{g/cc}$

$E_t = 0.9 \text{ MeV}, \Delta E_t = 0.9 \text{ MeV}, \sigma_{tn} \Delta E_t = 4.4(-26)\text{MeV} - \text{cm}^2$

T(keV)	1	2	5	10	20
$n^{-1}(dE_t/dx)(\text{MeV} - \text{cm}^2)$	2.2(-22)	9.3(-23)	3.3(-23)	1.81(-23)	1.2(-23)

$E_t = 1.5 \text{ MeV}, \Delta E_t = 1.5 \text{ MeV}, \sigma_{tn} \Delta E_t = 2.7(-26)\text{MeV} - \text{cm}^2$

T(keV)	1	2	5	10	20
$n^{-1}(dE_t/dx)(\text{MeV} - \text{cm}^2)$	2.8(-22)	1.15(-22)	3.7(-23)	1.77(-23)	1.0(-23)

$E_t = 2.1 \text{ MeV}, \Delta E_t = 0.6 \text{ MeV}, \sigma_{tn} \Delta E_t = 3.9(-26)\text{MeV} - \text{cm}^2$

T(keV)	1	2	5	10	20
$n^{-1}(dE_t/dx)(\text{MeV} - \text{cm}^2)$	3.3(-22)	1.34(-22)	4.2(-23)	1.86(-23)	9.6(-24)

$E_t = 2.5 \text{ MeV}, \Delta E_t = 0.4 \text{ MeV}, \sigma_{tn} \Delta E_t = 2.7(-26)\text{MeV} - \text{cm}^2$

T(keV)	1	2	5	10	20
$n^{-1}(dE_t/dx)(\text{MeV} - \text{cm}^2)$	3.6(-22)	1.45(-22)	4.5(-23)	1.94(-23)	9.6(-24)

## REFERENCES

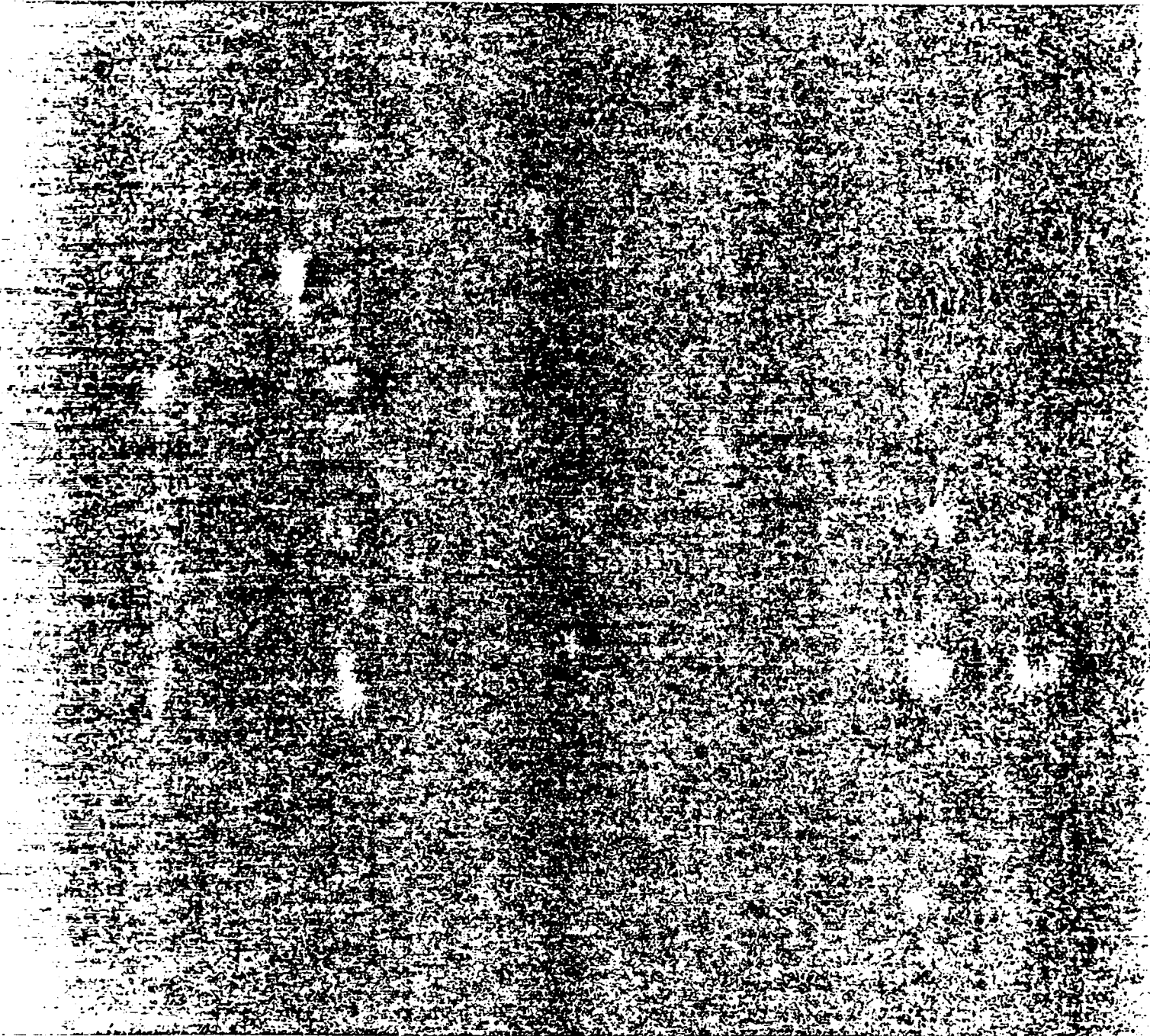
1. A. K. Val'mer, P. I. Vatset, L. Ya. Kolesnikov, S. G. Tonapetyan, K. K. Chernyavskii, and A. I. Shpetnyi, "Neutron Yield of the Reactions  $\text{Li}^6(t,n)$  and  $\text{Li}^7(t,n)$ ," *At. Energ.* 10, 577 (1961).
2. M. J. Martin, Editor-in-Chief (1981), *Nuclear Data Sheets*; "Charged Particle Reaction Lists," 34, 297 (1981); 31, 570 (1980); 29, 281 (1980); 26, 603 (1979); 24, 565 (1978).
3. F. Ajzenberg-Selove, "Energy Levels of Light Nuclei, A=5-10," *Nucl. Phys.* A320, 1 (1979).
4. R. J. Howerton, "Maxwell-Averaged Reaction Rates," Lawrence Livermore Laboratory report UCRL-50400, Vol. 21, Pt. A (February 1979).
5. J. Rand McNally, Jr., "Fusion Reactivity Graphs and Tables for Charged Particle Reactions," Oak Ridge National Laboratory report ORNL/TM-6914 (August 1979).
6. N. Jarmie and J. D. Seagrave, Eds., "Charged Particle Cross Sections," Los Alamos Scientific Laboratory report LA-2014 (February 1957).
7. V. I. Serov and B. Ya. Guzhovskii, "Investigation of the Reactions  $\text{Li}^6(t,n)$ ,  $\text{Li}^7(t,n)$ ," *At. Energ.* 12, 11 (1962).
8. N. Jarmie and B. C. Diven, " $\text{Li}(t,n)\text{Be}$  Thick Target Yields," *Nucl. Sci. Eng.* 17, 433 (1963).
9. R. W. Crews (1952), in N. Jarmie and J. D. Seagrave, Eds., "Charged Particle Cross Sections," Los Alamos Scientific Laboratory report LA-2014 (February 1957).
10. M. R. Seltz and D. Magnas-Valette, "Section Efficaces des Réactions  $\text{Li}(t,n)$ ," *C. R. Acad. Sciences, Paris* 251, 2006 (1960).
11. B. Ya. Guzhovskii, S. N. Abrarnovich, A. G. Zvenigorodskii, V. P. Protopopov, G. N. Slepsov, and S. V. Trusillo, "Total Cross Sections of the  ${}^6\text{Li}(d,n){}^7\text{Be}$ ,  ${}^7\text{Li}(d,2n){}^7\text{Be}$  and  ${}^6\text{Li}(d,2n){}^7\text{Be}$  Reactions," *Izv. Akad. Nauk. SSSR, Ser. Fiz.* 44, 1983 (1980).
12. H. H. Andersen and J. F. Ziegler, *Hydrogen* (Pergamon, New York, 1977).
13. J. J. Devaney and M. L. Stein, "Plasma Energy Deposition from Nuclear Elastic Scattering," *Nucl. Sci. Eng.* 46, 323 (1971).
14. C. L. Longmire, *Elementary Plasma Physics* (Interscience, New York, 1963).

Printed in the United States of America  
Available from  
National Technical Information Service  
US Department of Commerce  
5285 Port Royal Road  
Springfield, VA 22161

Microfiche (A01)

<u>Page Range</u>	<u>NTIS Price Code</u>	<u>Page Range</u>	<u>NTIS Price Code</u>	<u>Page Range</u>	<u>NTIS Price Code</u>	<u>Page Range</u>	<u>NTIS Price Code</u>
001-025	A02	151-175	A08	301-325	A14	451-475	A20
026-050	A03	176-200	A09	326-350	A15	476-500	A21
051-075	A04	201-225	A10	351-375	A16	501-525	A22
076-100	A05	226-250	A11	376-400	A17	526-550	A23
101-125	A06	251-275	A12	401-425	A18	551-575	A24
126-150	A07	276-300	A13	426-450	A19	576-600	A25
						601-up*	A99

\*Contact NTIS for a price quote.



Los Alamos